

# Christie URS

Auditoriums  
Boardrooms  
Broadcast studios  
Conference rooms  
Control rooms

Houses of worship  
Media centers  
Post production  
Rental and staging  
Training rooms



## Format-independent routing switcher for a multi-format world

Most routing switchers require all sources and destinations to be the same format. If the input source doesn't match the output display, peripheral hardware is required to process and convert it before the router can do its job.

But, not with the Christie® URS – all the processing is in the switcher which then routes the signal to any destination – quickly and easily. The Christie URS has an amazing amount of power in a very small package, so you need fewer wires, boxes and rack space.

The Christie URS handles any input-output combination of computer and video formats with ease, including analog/digital, interlaced/progressive, and high/low resolution. With built-in, integrated source monitoring and sophisticated keying, the

Christie URS accepts sources from analog composite to digital 4K and seamlessly routes them to any destination display. You won't find any matrix switcher on the market today that can do what the Christie URS does.

The Christie URS performs all the processing to match the source to the output, including scaling, aspect ratio, color space, and frame rate conversion. Normally, these functions require additional equipment and complex, restrictive control systems, however with the Christie URS the entire process is simplified, saving you time, money and resources.

This system also includes built-in source monitoring, so you can simultaneously check all (real-time) inputs – quickly and easily.

**CHRISTIE®**

# What is a Universal Routing Switcher?

Think of it as the anything-in, anything-out matrix switcher that processes as it routes. A Universal Routing Switcher (URS) accepts any source format, converts it, and sends it to any output display. It eliminates most or all of your front- and back-end boxes, reducing your requirements to one piece of equipment and one point of control.

There are two models in the Christie URS series:

**URS-0808** – 8 inputs, 8 outputs

**URS-1608** – 16 inputs, 8 outputs

## Key features

Universal input/output capabilities – mix and match multiple formats with one piece of equipment

Input capability – either 8 or 16 inputs (depending on model) that can be a mix of analog BNC and DVI signals

Output capability – 8 outputs that natively support any display from component analog 480i to digital 4K

Built-in conversion for analog/digital, interlaced/progressive, resolution, aspect ratio and frame rate – seamlessly route any source to any user-configurable output

Define properties for each output independent of each signal

Integrated source monitoring – real-time and full frame rate view of all sources connected to the Christie URS (either 16 or 8 inputs) on a single output, tiled into either a 4x4 array (URS-1608) or a 4x2 array (URS-0808)

Overlay (key) capability – up to four sources can be layered onto each output for a multitude of needs, including background/foreground transitions, PIP windows, bugs, lower-third titling, tickers, messaging, sign windows and more

Single point of control for all processing and signal distribution functions from front panel, PC via Ethernet, or external control system

Small form factor – (LxWxH): 21.9 x 17.3 x 7.0" (556 x 439 x 178mm). Additionally, only one piece of equipment is required so the overall space used on a rack is reduced

Each output individually supports rotation; enabling the creation of vertically-oriented displays

## Additional features

Easy-to-use, web-based interface enables monitoring and control of the Christie URS from any computer on the network

Built-in image capture/Still Store functionality

Auto set-up feature

Intuitive graphical user interface (GUI)

Simple cohesive control of all functions

Redundant hot-swappable power supplies

Optional URS-IBSS High Speed Infiniband Still Store server

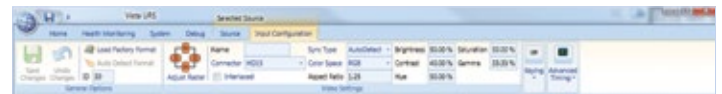
Optional stereoscopic support

The URS-0808 can be modified to support 16 inputs



## Software interface

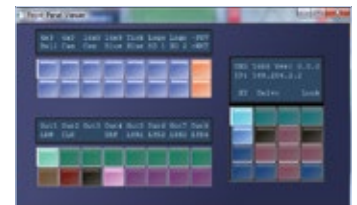
The Microsoft® Windows XP/Vista based control software for the Christie URS provides full setup, configuration, and real-time control of the routing switcher with an easy-to-use interface.



- ▲ The ribbon interface offers quick access to Christie URS functionality, and contextual tabs show only relevant information based on current application selections.



- ▲ The software user interface allows quick access to configuration and control.



- ▲ Christie URS front panel can be viewed and manipulated through the software interface.



- ▲ Output builder allows manual positioning and sizing of inputs.



- ▲ Output viewer shows real-time status of all outputs.

Christie URS-0808		Christie URS-1608
<b>Input</b>	number	• 8 inputs • 4 supporting composite, S-video, component analog, SDI, HD-SDI, and 3G-SDI (SMPTE 424M) • 4 supporting progressive DVI and progressive RGBHV
	signals	• Analog RGB composite, component • DVI, single-link and dual-link (8 inputs are dual-link capable) • SDI, HD-SDI and 3G-SDI (SMPTE 424M)
	pixel clock	• Analog up to 165 MHz • DVI up to 265 MHz
	resolutions	• Up to 2560 x 1600 (any resolution greater than 2048 x 1200 uses 2 input channels)
	scan rates	• Up to 120Hz dependant on pixel clock rate maximum
<b>Output</b>	number	• 8 @ (< 2048 x 1200) or 4 @ (2560 x 1600) or combination
	signals	• Analog RGB, component • DVI, single-link and dual-link (4 outputs are dual-link capable) • SDI, HD-SDI and 3G-SDI (SMPTE 424M)
	pixel clock	• Analog up to 165 MHz • DVI up to 265 MHz
	resolutions	• Up to 2560 x 1600 (any resolution greater than 2048 x 1200 uses 2 output channels)
	scan rates	• Up to 120Hz dependant on pixel clock rate maximum
<b>Control and networking</b>		• RS-232 in/out • Ethernet (10/100)
<b>Accessories</b>	standard	• 2 AC power cords • URS control software • Rack hardware
<b>Enhanced feature sets</b>		• Independent aspect ratio and frame rate setup • Overlays • Transitions • Aspect ratio conversions • Integrated source monitoring • Output rotation (portrait) • Optional stereoscopic support • Advanced 'auto-sync' functionality
<b>Power requirements</b>	operating voltage	• 100-240 VAC @ 50/60Hz, 12.0A
	operating current	• 9.0A @ 100 VAC
	power consumption	• 900W
	dissipation	• <750 BTU/h
<b>Dimensions</b>	space requirements	• 4RU
	size	• (LxWxH): 21.9 x 17.3 x 7.0" (556 x 439 x 178mm)
	shipping size	• (LxWxH): 32.3 x 25.5 x 15" (820 x 648 x 381mm)
	volume	• 2652in <sup>3</sup>
	weight	• 59lbs (27kg)
	shipping weight	• 70.5lbs (32kg)
<b>Operating environment</b>		• Temperature: 40-95°F (5-35°C) • Humidity: 20-80% non-condensing
<b>Regulatory approvals</b>		• This product conforms to the following directives, regulations and regulatory approvals related to product safety, environmental requirements and electromagnetic compatibility (EMC): • Directives: (EC) 2002/95/EC (RoHS) • 2002/96/EC (WEEE) • Regulations: (EC) No. 1907/2006 (REACH) • Regulatory Approvals: CAN/CSA-C22.2 No 60065-1 • UL 60065-1 • IEC60065-1 • FCC Part 15, Subpart B Class A • EN55103-1 • EN55103-2 • EN61000-3-2 • EN61000-3-3 • Certification marks (check with Christie for latest update): cULus (Canada & US), CE (EU), CCC (China), GoST-R (Russia), C-Tick (Australia & New Zealand), S-Mark (Japan), KC (Korea), South Africa, Saudi Arabia
<b>Limited warranty</b>		• One year parts and labor • Contact an authorized Christie representative for full details of our limited warranty

## Minimum PC Requirements

**Microsoft Windows Vista-based computers**  
Microsoft's Windows Vista platform provides a rating called the 'Windows Experience Index', which measures the capability of your computer's hardware and software configuration and expresses this measurement as a number called a base score. A higher base score generally means that your computer will perform better and faster than a computer with a lower base score, and makes it simple to purchase a PC with confidence that it will work properly with the Vista Advanced software interface.

### Requirements

'Windows Experience Index' of 4.0 or greater

**Microsoft Windows XP-based computers**  
Computers running the Windows XP user interface do not support the 'Windows Experience Index' provided in Windows Vista, and therefore the hardware profile listed below can be used as a base hardware configuration.

### Requirements

Pentium 4, 2.5Ghz or equivalent

512MB of RAM

128MB, DirectX 9.0 compatible video card (Nvidia preferred)

Windows XP Professional, Service Pack 2 or later

Microsoft .NET framework, Version 2.0 or later

Microsoft DirectX 9.0c or later

Note: MAC or PC emulators such as VMWare and Microsoft Virtual PC should not be used to run Vista Advanced, and Christie cannot provide support for users using an emulator of any kind.



- ▲ The Christie URS front panel interface goes beyond the traditional cross point capabilities found on other routing switchers. The Christie URS front panel enables users to quickly perform virtually any configuration or control task available on the routing switcher. LCD labeling and multi-color switches create an enhanced user experience that makes the front panel easy to use and easy to understand.



- ▲ The URS-1608 has 16 inputs and 8 outputs, and redundant, hot-swappable power supplies.



- ▲ The URS-0808 has 8 inputs and 8 outputs, and can be modified to support 16 inputs.

#### Corporate offices

---

Christie Digital Systems USA, Inc.  
Cypress  
ph: 714 236 8610

Christie Digital Systems Canada Inc.  
Kitchener  
ph: 519 744 8005

#### Independent sales consultant offices

---

Italy  
ph: +39 (0) 2 9902 1161

#### Worldwide offices

---

Australia  
ph: +61 (0) 7 3624 4888

Brazil  
ph: +55 (11) 2548 4753

China (Beijing)  
ph: +86 10 6561 0240

China (Shanghai)  
ph: +86 21 6278 7708

France  
ph: +33 (0) 1 41 21 44 04

Germany  
ph: +49 2161 664540

India  
ph: +91 (080) 6708 9999

Japan (Tokyo)  
ph: 81 3 3599 7481

Korea (Seoul)  
ph: +82 2 702 1601

Mexico  
ph: +52 55 4744 1790

Republic of South Africa  
ph: +27 (0)11 510 0094

Russian Federation  
Eastern Europe  
ph: +36 (0) 1 47 48 100

Singapore  
ph: +65 6877 8737

Spain  
ph: +34 91 633 9990

United Arab Emirates  
ph: +971 4 3206688

United Kingdom  
ph: +44 (0) 118 977 8000

United States (Arizona)  
ph: 602 943 5700

United States (New York)  
ph: 646 779 2014

For the most current specification information, please visit [www.christiedigital.com](http://www.christiedigital.com)



Copyright 2015 Christie Digital Systems USA, Inc. All rights reserved. All brand names and product names are trademarks, registered trademarks or tradenames of their respective holders. Christie Digital Systems Canada Inc.'s management system is registered to ISO 9001 and ISO 14001. Performance specifications are typical. Due to constant research, specifications are subject to change without notice. Printed in Canada on recycled paper. 4062 Jun 15

**CHRISTIE®**