

Christie JumpStart



Monitor not supplied

Easy content management for large-format digital displays

Christie® JumpStart is an easy-to-use content management solution for digital displays requiring up to six video inputs.

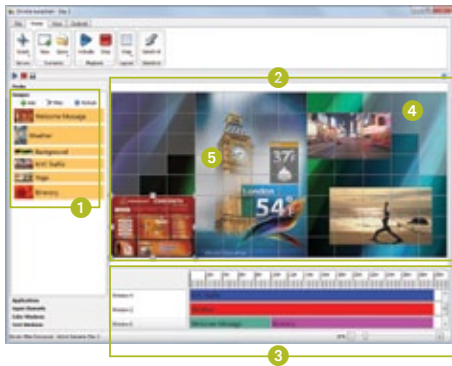
Arranging content in various shapes and resolutions on a large video wall doesn't have to be expensive or difficult. Christie JumpStart is an innovative, straightforward and robust solution with a media server that lets you create a multimedia display that is rich in content for a 5-15 megapixel digital canvas.

Managing content with Christie JumpStart is an uncomplicated, time-saving process. No need for separate inputs to play back files or run applications. Place and scale windows anywhere on your canvas quickly and effortlessly and easily control Christie JumpStart locally or from a remote computer.

Christie JumpStart is compatible with any digital display, including our rear-projection and flat-panel solutions. It's also the perfect companion for Christie MicroTiles®, automatically recognizing the tiles and optimizing the resolution of the display canvas, no matter the shape or cabling layout. The user interface plots an exact representation of the MicroTiles canvas, showing the location of each tile so you can quickly snap content into the right position.

With Christie JumpStart, you have the creative freedom to unlock the full potential of your high-resolution digital canvas with stunning graphics and video playback.

CHRISTIE®



Christie JumpStart features



- 1 Place content** – Intuitive and uncluttered, Christie JumpStart makes it easy to manage and place content onto the canvas.
- 2 Creative flexibility** – Place video files, graphics, Microsoft Windows applications, Blu-ray and DVD movies, color swatches and text anywhere on the canvas to create a multimedia wall that is rich in content.
- 3 Playback on a timeline** – Easily arrange content to play back on a timeline. Start and stop manually, or through serial over IP.
- 4 Plug and play** – Christie JumpStart supports independent, non-standard resolutions, and automatically sets the optimal resolution for a Christie MicroTiles canvas.
- 5 See the canvas** – When Christie MicroTiles are connected, Christie JumpStart plots every tile in the canvas, so content can be placed with precision.

Technical specifications		0 inputs/6 outputs model	4 inputs/6 outputs model
Input	number and type	• 0	• 4 x DVI-I (2 x VGA to DVI, 1 x HDMI to DVI and 1 x Component to DVI adapters included)
	max. resolution per channel	• n/a	• 1920 x 1200 (Digital), 2048 x 1536 (Analog) ¹
	HDCP	• n/a	• Not supported
Output	number and type	• 6 x mini DisplayPort (6 x active mDP to DVI-D adapters included)	
	max. resolution per channel	• 1920 x 1200 @ 60Hz via single-link DVI • 2560 x 1600 @ 60Hz via dual-link DVI (adapters not included) • 4096 x 2160 @ 60Hz via DisplayPort 1.2	
	HDCP	• Supported	
System	platform	• HP Z620 Workstation	
	operating system	• Windows 7 Professional 64-bit	
	processor	• 3.6 GHz	
	memory and hard drive	• 16GB • 1 x 1 TB	
	optical drives	• DVD ± RW/Blu-ray	
Connectivity	USB	• USB 2.0: 5 • USB 3.0: 4	
	ethernet	• 2	
	IEEE 1394a	• 2	
	audio out	• 1	
Power	input rating	• 100-240 VAC; 50/60Hz; 3A	
	power consumption	• 86W typical	
Environmental	operating temperature	• 40-95°F (5-35°C)	
	operating humidity	• 8-85% non-condensing	
	storage temperature	• -40-140°F (-40-60°C)	
Physical specifications	dimensions (LxWxH)	• 18.3 x 6.8 x 17.5" (465 x 172 x 445mm)	
	weight	• 39.4lbs (17.9kg)	
	rack mountable	• Yes, with kit 4U	
Accessories	included	• Mouse • Keyboard • mDP adapters (see above)	
	optional	• Rack mount kit	
Regulatory approvals	This product conforms to the following regulations related to product safety, environmental requirements and electromagnetic compatibility (EMC): • Directives: (EC) 2011/65/EU (RoHS) • 2012/19/EU (WEEE) • Regulations: (EC) No. 1907/2006 (REACH) • CAN/CSA C22.2 No. 60950-1 • UL 60950-1 • IEC 60950-1 • EN 60950-1 • FCC, Part 15, Subpart B, Class A • ICES/NMB003 (A) • EN55022/CISPR22 Class A • EN55024/CISPR24 The product is designed to comply to the rules and regulations required for the product to be sold in various regional markets, including: USA/Canada, EU, Norway, Australia/New Zealand, Kuwait, China, Korea, Japan, Mexico, Ukraine, Russia, South Africa, India, and Saudi Arabia		
Limited warranty	• Two years parts and labor limited warranty on hardware • Contact an authorized Christie representative for full details		

¹ Maximum rendered frame rate is affected by the number and resolution of inputs, as follows, based on 60Hz input signals: (Resolution, Inputs, FPS) 1920 x 1200, 1, 45; 1920 x 1200, 2, 20; 1280 x 1024, 1, 60; 1280 x 1024, 2, 50; 1280 x 1024, 4, 40

Corporate offices

Christie Digital Systems USA, Inc.
USA – Cypress
ph: 714 236 8610

Christie Digital Systems Canada Inc.
Canada – Kitchener
ph: 519 744 8005

Worldwide offices

Australia
ph: +61 (0) 7 3844 9514

Brazil
ph: +55 (11) 2548 4753

China (Beijing)
ph: +86 10 6561 0240

China (Shanghai)
ph: +86 21 6278 7708

Eastern Europe and
Russian Federation
ph: +36 (0) 1 47 48 100

France
ph: +33 (0) 1 41 21 44 04

Germany
ph: +49 2161 664540

India
ph: +91 9 8 1133 2760

Japan (Tokyo)
ph: 81 3 3599 7481

Korea (Seoul)
ph: +82 2 702 1601

Republic of South Africa
ph: +27 (0)11 510 0094

Singapore
ph: +65 6877 8737

Spain
ph: +34 91 633 9990

United Arab Emirates
ph: +971 4 3206688

United Kingdom
ph: +44 (0) 118 977 8000

**Independent sales
consultant offices**

Italy
ph: +39 (0) 2 9902 1161



For the most current specification information, please visit www.christiedigital.com

Copyright 2013 Christie Digital Systems USA, Inc. All rights reserved. All brand names and product names are trademarks, registered trademarks or tradenames of their respective holders. Christie Digital Systems Canada Inc.'s management system is registered to ISO 9001 and ISO 14001.

Performance specifications are typical. Due to constant research, specifications are subject to change without notice.

Printed in Canada on recycled paper. 3575 May 13

CHRISTIE®