

CineLife+

The most advanced cinema electronics



- › **Hyperrealism:** New system architecture displays content without motion blur or artifacts
- › **Ultra-fast processing:** HDMI 2.0 and 4x 12GB SDI inputs for 1.06G pixels per second
- › **Electronic Color Convergence:** Provides perfect alignment throughout the entire image
- › **Long-lasting light source:** For more than 50,000 hours of optimal performance
- › **Quick and easy setup:** Auto-configure automatically adjusts settings for optimal playback
- › **Advanced format cinema:** HFR support for 2K and 4K 120fps native 3D playback

Discover
more



CineLife+
Page

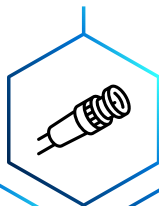




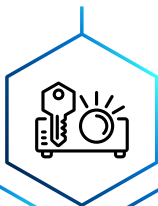
Touch Panel
Interface



12G SDI
inputs



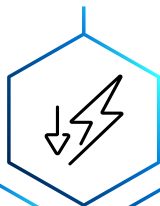
Rental Mode



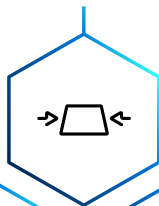
ECC



Energy efficient
Standby Mode



ScreenFit™



Mystique™
Cinema



2K resolution



4K resolution



Remote UI



LiteLOC™



High frame
rate



Premium
large format



CP4455-RGB

Redefining the premium in large formats



- › **Hyperrealism:** New system architecture displays content without motion blur or artifacts
- › **Advanced format cinema:** HFR support for 4K 120fps native 3D playback
- › **Operational efficiency:** Achieves 12.4 lumens per watt
- › **Long-lasting light source:** For more than 50,000 hours of optimal performance
- › **Ultra-fast processing:** HDMI 2.0 and 4x 12GB SDI inputs for 1.06G pixels per second

Discover
more

[CP4455-RGB
Product page](#)



CHRISTIE
Real|aser™

CineLife+™

CP4455-RGB

Redefining the premium in large formats

- › **Electronic Color Convergence:** Provides perfect alignment throughout the entire image
- › **ScreenFit™:** Keystone and screen curvature correction to properly fit the image to the screen
- › **Enhanced Wavelength Diversity (EWD):** Multi-wavelength primary color lasers improve image performance on high-gain screens



Discover
more

[CP4455-RGB
Product page](#)



CP4445-RGB

Redefining the premium in large formats



- › **Hyperrealism:** New system architecture displays content without motion blur or artifacts
- › **Advanced format cinema:** HFR support for 4K 120fps native 3D playback
- › **Operational efficiency:** Achieves 11.2 lumens per watt
- › **Long-lasting light source:** For more than 50,000 hours of optimal performance
- › **Ultra-fast processing:** HDMI 2.0 and 4x 12GB SDI inputs for 1.06G pixels per second

Discover
more

[CP4445-RGB
Product page](#)



CHRISTIE
Real|aser™

CineLife+™

CP4445-RGB

Redefining the premium in large formats

- › **Electronic Color Convergence:** Provides perfect alignment throughout the entire image
- › **ScreenFit™:** Keystone and screen curvature correction to properly fit the image to the screen
- › **Enhanced Wavelength Diversity (EWD):** Multi-wavelength primary color lasers improve image performance on high-gain screens



Discover
more

[CP4445-RGB
Product page](#)



CP4435-RGB

Advanced RGB pure laser for mainstream cinema



- › **Hyperrealism:** New system architecture displays content without motion blur or artifacts
- › **Advanced format cinema:** HFR support for 4K 120fps native 3D playback
- › **Operational efficiency:** Achieves 14.6 lumens per watt
- › **Long-lasting light source:** For more than 50,000 hours of optimal performance
- › **Ultra-fast processing:** HDMI 2.0 and 4x 12GB SDI inputs for 1.06G pixels per second
- › **Electronic Color Convergence:** Provides perfect alignment throughout the entire image

Discover
more

[CP4435-RGB
Product page](#)



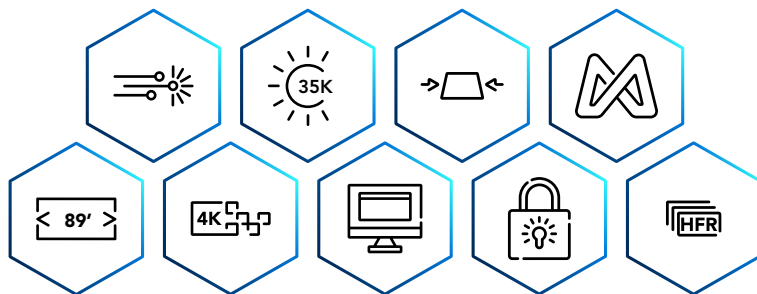
CHKISTIE
Real|laser™

CineLife+™

CP4435-RGB

Advanced RGB pure laser for mainstream cinema

- › **ScreenFit™:** Keystone and screen curvature correction to properly fit the image to the screen
- › **Enhanced Wavelength Diversity (EWD):** Multi-wavelength primary color lasers improve image performance on high-gain screens
- › **Unobtrusive installation:** Compact, all-in-one form factor with a thermal redesigned cooling system that helps make it 2.5x quieter
- › **Ultra-low maintenance:** Tool-free filter replacements and fully-sealed optics for protection against dust-ingress



Discover
more

[CP4435-RGB
Product page](#)



CP4425-RGB

Advanced RGB pure laser for mainstream cinema



- › **Hyperrealism:** New system architecture displays content without motion blur or artifacts
- › **Advanced format cinema:** HFR support for 4K 120fps native 3D playback
- › **Operational efficiency:** Achieves 14.1 lumens per watt
- › **Long-lasting light source:** For more than 50,000 hours of optimal performance
- › **Ultra-fast processing:** HDMI 2.0 and 4x 12GB SDI inputs for 1.06G pixels per second
- › **Electronic Color Convergence:** Provides perfect alignment throughout the entire image

Discover
more

[CP4425-RGB
Product page](#)



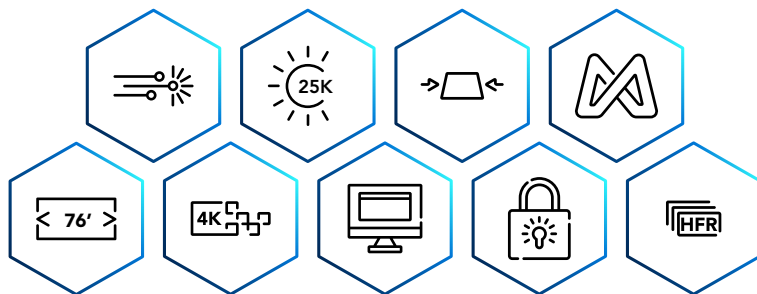
CHKISTIE
Real|laser™

CineLife+™

CP4425-RGB

Advanced RGB pure laser for mainstream cinema

- › **ScreenFit™:** Keystone and screen curvature correction to properly fit the image to the screen
- › **Enhanced Wavelength Diversity (EWD):** Multi-wavelength primary color lasers improve image performance on high-gain screens
- › **Unobtrusive installation:** Compact, all-in-one form factor with a thermal redesigned cooling system that helps make it 2.5x quieter
- › **Ultra-low maintenance:** Tool-free filter replacements and fully-sealed optics for protection against dust-ingress



Discover
more

[CP4425-RGB
Product page](#)



CP4420-RGB

Advanced RGB pure laser for mainstream cinema



- › **Hyperrealism:** New system architecture displays content without motion blur or artifacts
- › **Advanced format cinema:** HFR support for 4K 120fps native 3D playback
- › **Operational efficiency:** Achieves 12.6 lumens per watt
- › **Long-lasting light source:** For more than 50,000 hours of optimal performance
- › **Ultra-fast processing:** HDMI 2.0 and 4x 12GB SDI inputs for 1.06G pixels per second
- › **Electronic Color Convergence:** Provides perfect alignment throughout the entire image

Discover
more

[CP4420-RGB
Product page](#)



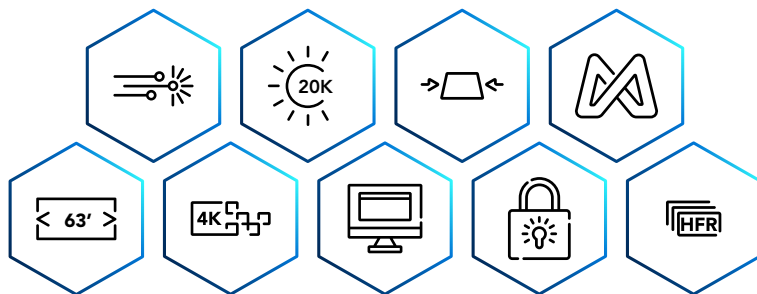
CHKISTIE
Real|laser™

CineLife+™

CP4420-RGB

Advanced RGB pure laser for mainstream cinema

- › **ScreenFit™:** Keystone and screen curvature correction to properly fit the image to the screen
- › **Enhanced Wavelength Diversity (EWD):** Multi-wavelength primary color lasers improve image performance on high-gain screens
- › **Unobtrusive installation:** Compact, all-in-one form factor with a thermal redesigned cooling system that helps make it 2.5x quieter
- › **Ultra-low maintenance:** Tool-free filter replacements and fully-sealed optics for protection against dust-ingress



Discover
more

[CP4420-RGB
Product page](#)



CP4415-RGB

Advanced RGB pure laser for mainstream cinema



- › **Hyperrealism:** New system architecture displays content without motion blur or artifacts
- › **Advanced format cinema:** HFR support for 4K 120fps native 3D playback
- › **Operational efficiency:** Achieves 11.6 lumens per watt
- › **Long-lasting light source:** For more than 50,000 hours of optimal performance
- › **Ultra-fast processing:** HDMI 2.0 and 4x 12GB SDI inputs for 1.06G pixels per second
- › **Electronic Color Convergence:** Provides perfect alignment throughout the entire image

Discover
more

[CP4415-RGB
Product page](#)



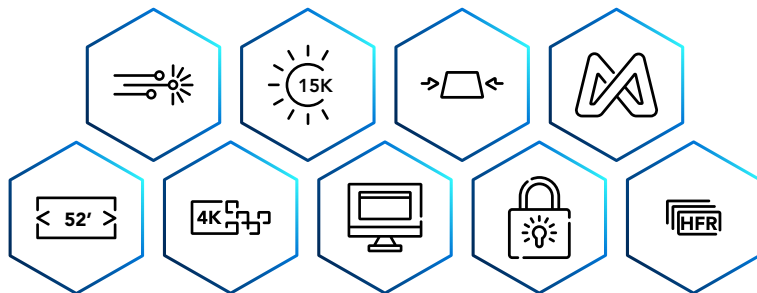
CHKISTIE
Real|laser™

CineLife+™

CP4415-RGB

Advanced RGB pure laser for mainstream cinema

- › **ScreenFit™:** Keystone and screen curvature correction to properly fit the image to the screen
- › **Enhanced Wavelength Diversity (EWD):** Multi-wavelength primary color lasers improve image performance on high-gain screens
- › **Unobtrusive installation:** Compact, all-in-one form factor with a thermal redesigned cooling system that helps make it 2.5x quieter
- › **Ultra-low maintenance:** Tool-free filter replacements and fully-sealed optics for protection against dust-ingress



Discover
more

[CP4415-RGB
Product page](#)



CP4420m-RGBH

More illumination options for every cinema screen

- › **0.98" 4K SST DMD:** For optimized optical performance in a more cost-effective and compact projector
- › **Hybrid laser light source:** Hybrid laser light source optimized for post-production and stunning visuals on all cinema screens
- › **Smaller, quieter form factor:** Ideal for small spaces and boothless installations with a compact chassis and less than 48 dBA
- › **Hyperrealism:** New system architecture displays content without motion blur or artifacts
- › **Advanced format cinema:** HFR support for 4K 120fps native 3D playback
- › **Operational efficiency:** Achieves 14.8 lumens per watt



Discover
more



[CP4420m-RGBH
Product page](#)



CHRISTIE
PHAZER



CP4420m-RGBH

More illumination options for every cinema screen

- › **Long-lasting light source:** For more than 50,000 hours of optimal performance
- › **Ultra-fast processing:** HDMI 2.0 and 4x 12GB SDI inputs for 1.06G pixels per second
- › **Electronic Color Convergence:** Provides perfect alignment throughout the entire image
- › **ScreenFit™:** Keystone and screen curvature correction to properly fit the image to the screen
- › **Enhanced Wavelength Diversity (EWD):** Multi-wavelength primary color lasers improve image performance on high-gain screens
- › **Unobtrusive installation:** Compact, all-in-one form factor with a thermal redesigned cooling system that helps make it 2.5x quieter
- › **Ultra-low maintenance:** Tool-free filter replacements and fully-sealed optics for protection against dust-ingress



Discover
more



[CP4420m-RGBH
Product page](#)



CP4415m-RGBH

More illumination options for every cinema screen

- › **0.98" 4K SST DMD:** For optimized optical performance in a more cost-effective and compact projector
- › **Hybrid laser light source:** Hybrid laser light source optimized for post-production and stunning visuals on all cinema screens
- › **Smaller, quieter form factor:** Ideal for small spaces and boothless installations with a compact chassis and less than 43 dBA
- › **Hyperrealism:** New system architecture displays content without motion blur or artifacts
- › **Advanced format cinema:** HFR support for 4K 120fps native 3D playback
- › **Operational efficiency:** Achieves 14.2 lumens per watt



Discover
more



[CP4415m-RGBH
Product page](#)



CHRISTIE
PHAZER



CP4415m-RGBH

More illumination options for every cinema screen

- › **Long-lasting light source:** For more than 50,000 hours of optimal performance
- › **Ultra-fast processing:** HDMI 2.0 and 4x 12GB SDI inputs for 1.06G pixels per second
- › **Electronic Color Convergence:** Provides perfect alignment throughout the entire image
- › **ScreenFit™:** Keystone and screen curvature correction to properly fit the image to the screen
- › **Enhanced Wavelength Diversity (EWD):** Multi-wavelength primary color lasers improve image performance on high-gain screens
- › **Unobtrusive installation:** Compact, all-in-one form factor with a thermal redesigned cooling system that helps make it 2.5x quieter
- › **Ultra-low maintenance:** Tool-free filter replacements and fully-sealed optics for protection against dust-ingress



Discover
more



[CP4415m-RGBH
Product page](#)



CP2411-RBe

Enhanced laser illumination



- › **Advanced format cinema:** HFR support for 4K 120fps native 3D playback
- › **Operational efficiency:** Achieves 8.8 lumens per watt
- › **Long-lasting light source:** For more than 50,000 hours of optimal performance
- › **Ultra-fast processing:** HDMI 2.0 and 4x 12GB SDI inputs for 1.06G pixels per second
- › **Electronic Color Convergence:** Provides perfect alignment throughout the entire image
- › **ScreenFit™:** Keystone and screen curvature correction to properly fit the image to the screen

Discover
more



[CP2411-RBe
Product page](#)



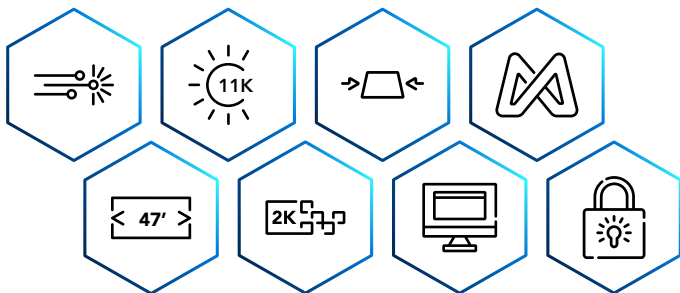
CHKISTIE
PHAZER



CP2411-RBe

Enhanced laser illumination

- › **Enhanced Wavelength Diversity (EWD):** Multi-wavelength primary color lasers improve image performance on high-gain screens
- › **Unobtrusive installation:** Compact, all-in-one form factor with a thermal redesigned cooling system that helps make it 2.5x quieter
- › **Ultra-low maintenance:** Tool-free filter replacements and fully-sealed optics for protection against dust-ingress
- › **Easy to operate:** UX-inspired interface for playback, scheduling, and content management



Discover
more

[CP2411-RBe
Product page](#)



CP2409-RBe

Enhanced laser illumination



- › **Advanced format cinema:** HFR support for 4K 120fps native 3D playback
- › **Operational efficiency:** Achieves 9.6 lumens per watt
- › **Long-lasting light source:** For more than 50,000 hours of optimal performance
- › **Ultra-fast processing:** HDMI 2.0 and 4x 12GB SDI inputs for 1.06G pixels per second
- › **Electronic Color Convergence:** Provides perfect alignment throughout the entire image
- › **ScreenFit™:** Keystone and screen curvature correction to properly fit the image to the screen

Discover
more



[CP2409-RBe
Product page](#)



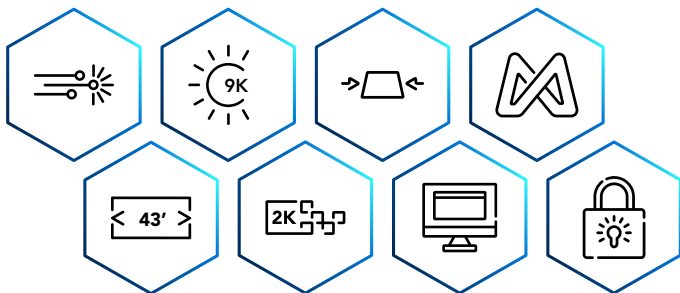
CHKISTIE
PHAZER



CP2409-RBe

Enhanced laser illumination

- › **Enhanced Wavelength Diversity (EWD):** Multi-wavelength primary color lasers improve image performance on high-gain screens
- › **Unobtrusive installation:** Compact, all-in-one form factor with a thermal redesigned cooling system that helps make it 2.5x quieter
- › **Ultra-low maintenance:** Tool-free filter replacements and fully-sealed optics for protection against dust-ingress
- › **Easy to operate:** UX-inspired interface for playback, scheduling, and content management



Discover
more

[CP2409-RBe
Product page](#)



CP2406-RBe

Enhanced laser illumination



- › **Advanced format cinema:** HFR support for 4K 120fps native 3D playback
- › **Operational efficiency:** Achieves 9.8 lumens per watt
- › **Long-lasting light source:** For more than 50,000 hours of optimal performance
- › **Ultra-fast processing:** HDMI 2.0 and 4x 12GB SDI inputs for 1.06G pixels per second
- › **Electronic Color Convergence:** Provides perfect alignment throughout the entire image
- › **ScreenFit™:** Keystone and screen curvature correction to properly fit the image to the screen

Discover
more



[CP2406-RBe
Product page](#)



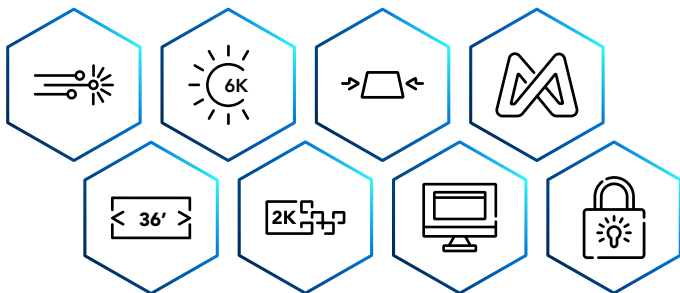
CHKISTIE
P H A  E R



CP2406-RBe

Enhanced laser illumination

- › **Enhanced Wavelength Diversity (EWD):** Multi-wavelength primary color lasers improve image performance on high-gain screens
- › **Unobtrusive installation:** Compact, all-in-one form factor with a thermal redesigned cooling system that helps make it 2.5x quieter
- › **Ultra-low maintenance:** Tool-free filter replacements and fully-sealed optics for protection against dust-ingress
- › **Easy to operate:** UX-inspired interface for playback, scheduling, and content management



Discover
more

[CP2406-RBe
Product page](#)



CP2415-RGB

Advanced RGB pure laser illumination



- › **Hyperrealism:** New system architecture displays content without motion blur or artifacts
- › **Advanced format cinema:** HFR support for 4K 120fps native 3D playback
- › **Operational efficiency:** Achieves 12.7 lumens per watt
- › **Long-lasting light source:** For more than 50,000 hours of optimal performance
- › **Ultra-fast processing:** HDMI 2.0 and 4x 12GB SDI inputs for 1.06G pixels per second
- › **Electronic Color Convergence:** Provides perfect alignment throughout the entire image

Discover
more

[CP2415-RGB
Product page](#)



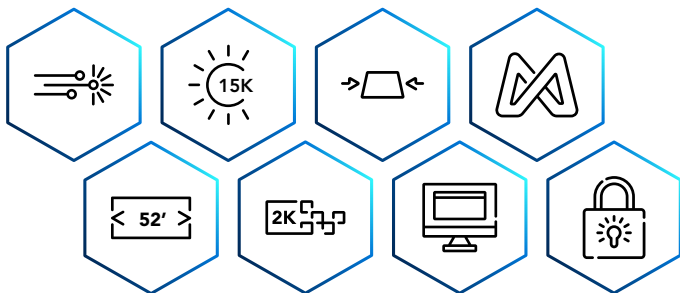
CHRISTIE
Real|laser™

CineLife+™

CP2415-RGB

Advanced RGB pure laser illumination

- › **ScreenFit™:** Keystone and screen curvature correction to properly fit the image to the screen
- › **Enhanced Wavelength Diversity (EWD):** Multi-wavelength primary color lasers improve image performance on high-gain screens
- › **Unobtrusive installation:** Compact, all-in-one form factor with a thermal redesigned cooling system that helps make it 2.5x quieter
- › **Ultra-low maintenance:** Tool-free filter replacements and fully-sealed optics for protection against dust-ingress



Discover
more

[CP2415-RGB
Product page](#)



CP2420-RGB

Advanced RGB pure laser illumination



- › **Hyperrealism:** New system architecture displays content without motion blur or artifacts
- › **Advanced format cinema:** HFR support for 4K 120fps native 3D playback
- › **Operational efficiency:** Achieves 12.9 lumens per watt
- › **Long-lasting light source:** For more than 50,000 hours of optimal performance
- › **Ultra-fast processing:** HDMI 2.0 and 4x 12GB SDI inputs for 1.06G pixels per second
- › **Electronic Color Convergence:** Provides perfect alignment throughout the entire image

Discover
more

[CP2420-RGB
Product page](#)



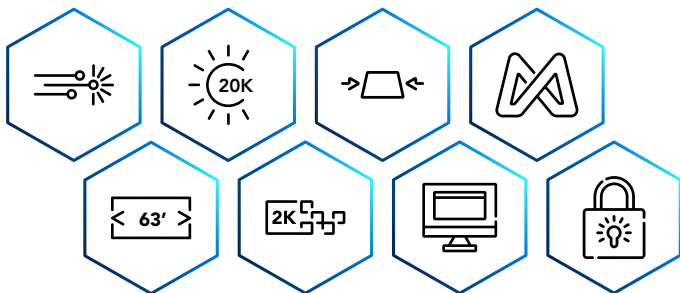
CHRISTIE
Real|laser™

CineLife+™

CP2420-RGB

Advanced RGB pure laser illumination

- › **ScreenFit™:** Keystone and screen curvature correction to properly fit the image to the screen
- › **Enhanced Wavelength Diversity (EWD):** Multi-wavelength primary color lasers improve image performance on high-gain screens
- › **Unobtrusive installation:** Compact, all-in-one form factor with a thermal redesigned cooling system that helps make it 2.5x quieter
- › **Ultra-low maintenance:** Tool-free filter replacements and fully-sealed optics for protection against dust-ingress



Discover
more

[CP2420-RGB
Product page](#)



CP4420-Xe

Low upfront investment for advanced cinema illumination



- › **Hyperrealism:** New system architecture displays content without motion blur or artifacts
- › **Advanced format cinema:** HFR support for 4K 120fps native 3D playback
- › **Ultra-fast processing:** HDMI 2.0 and 4x 12GB SDI inputs for 1.06G pixels per second
- › **ScreenFit™:** Keystone and screen curvature correction to properly fit the image to the screen
- › **Easy to install:** Lightweight all-in-one chassis for flexible mounting

Discover
more



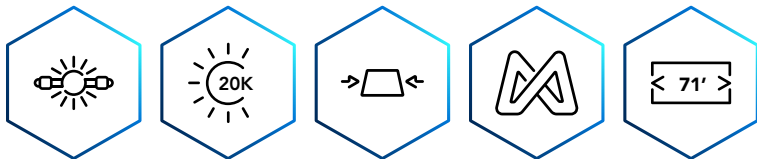
[CP4420-Xe
Product page](#)



CP4420-Xe

Low upfront investment for advanced cinema illumination

- › **Flexibility in brightness:** Operates with standard 2.0kW and 3.0kW lamps and 3.0kW high performance lamps
- › **Backwards compatibility:** Fully-compatible with all existing Solaria Series 2 accessories, including the Christie Rack Mount Pedestal and existing cinema lenses for additional cost-savings
- › **Easy to maintain:** Tool-less filter replacements and quick access for simple in-house lamp changes
- › **Assured reliability:** Split-power operation for use with a UPS (uninterruptible power supply)



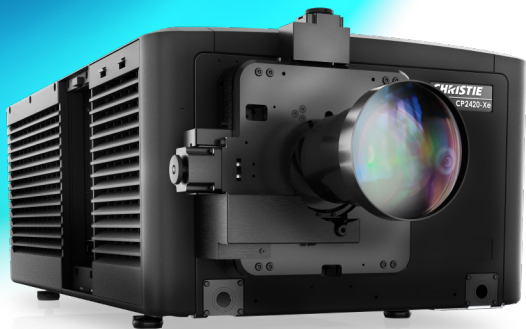
Discover
more

[CP4420-Xe
Product page](#)



CP2420-Xe

Low upfront investment for advanced cinema illumination



- › **Hyperrealism:** New system architecture displays content without motion blur or artifacts
- › **Ultra-fast processing:** HDMI 2.0 and 4x 12GB SDI inputs for 1.06G pixels per second
- › **ScreenFit™:** Keystone and screen curvature correction to properly fit the image to the screen
- › **Easy to install:** Lightweight all-in-one chassis for flexible mounting
- › **Flexibility in brightness:** Operates with standard 2.0kW and 3.0kW lamps and 3.0kW high performance lamps

Discover
more



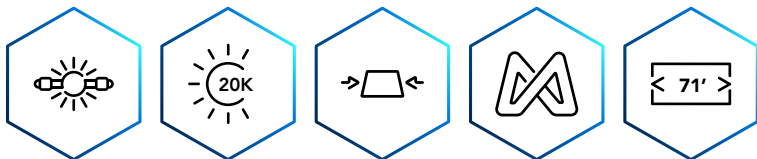
[CP2420-Xe
Product page](#)



CP2420-Xe

Low upfront investment for advanced cinema illumination

- › **Backwards compatibility:** Fully-compatible with all existing Solaria Series 2 accessories, including the Christie Rack Mount Pedestal and existing cinema lenses for additional cost-savings
- › **Easy to maintain:** Tool-less filter replacements and quick access for simple in-house lamp changes
- › **Assured reliability:** Split-power operation for use with a UPS (uninterruptible power supply)



Discover
more

[CP2420-Xe
Product page](#)



CP2415-Xe

Low upfront investment for advanced cinema illumination



- › **Hyperrealism:** New system architecture displays content without motion blur or artifacts
- › **Ultra-fast processing:** HDMI 2.0 and 4x 12GB SDI inputs for 1.06G pixels per second
- › **ScreenFit™:** Keystone and screen curvature correction to properly fit the image to the screen
- › **Easy to install:** Lightweight all-in-one chassis for flexible mounting
- › **Flexibility in brightness:** Operates with standard 2.0kW and 3.0kW lamps and 3.0kW high performance lamps

Discover
more



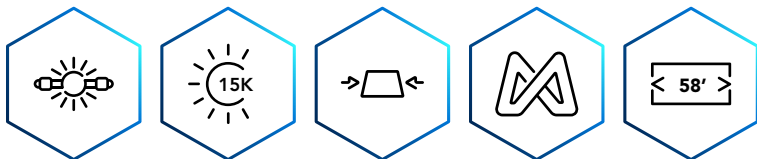
[CP2415-Xe
Product page](#)



CP2415-Xe

Low upfront investment for advanced cinema illumination

- › **Backwards compatibility:** Fully-compatible with all existing Solaria Series 2 accessories, including the Christie Rack Mount Pedestal and existing cinema lenses for additional cost-savings
- › **Easy to maintain:** Tool-less filter replacements and quick access for simple in-house lamp changes
- › **Assured reliability:** Split-power operation for use with a UPS (uninterruptible power supply)



Discover
more

[CP2415-Xe
Product page](#)

