

# Christie JumpStart



Monitor not supplied

## Easy content management for large-format digital displays

Christie® JumpStart is an easy-to-use content management solution for digital displays requiring up to six video inputs.

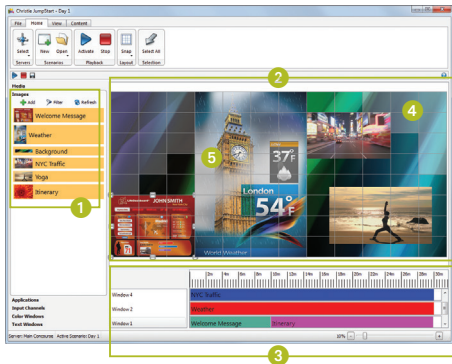
Arranging content in various shapes and resolutions on a large video wall doesn't have to be expensive or difficult. Christie JumpStart is an innovative, straightforward and robust solution with a media server that lets you create a multimedia display that is rich in content for a 5-15 megapixel digital canvas.

Managing content with Christie JumpStart is an uncomplicated, time-saving process. No need for separate inputs to play back files or run applications. Place and scale windows anywhere on your canvas quickly and effortlessly and easily control Christie JumpStart locally or from a remote computer.

Christie JumpStart is compatible with any digital display, including our rear-projection and flat-panel solutions. It's also the perfect companion for Christie MicroTiles®, automatically recognizing the tiles and optimizing the resolution of the display canvas, no matter the shape or cabling layout. The user interface plots an exact representation of the MicroTiles canvas, showing the location of each tile so you can quickly snap content into the right position.

With Christie JumpStart, you have the creative freedom to unlock the full potential of your high-resolution digital canvas with stunning graphics and video playback.

**CHRISTIE®**



## Christie JumpStart features

- 1 Place content** - Intuitive and uncluttered, Christie JumpStart makes it easy to manage and place content onto the canvas.
- 2 Creative flexibility** - Place video files, graphics, Microsoft Windows applications, Blu-ray and DVD movies, color swatches and text anywhere on the canvas to create a multimedia wall that is rich in content.
- 3 Playback on a timeline** - Easily arrange content to play back on a timeline. Start and stop manually, or through serial over IP.
- 4 Plug and play** - Christie JumpStart supports independent, non-standard resolutions, and automatically sets the optimal resolution for a Christie MicroTiles canvas.
- 5 See the canvas** - When Christie MicroTiles are connected, Christie JumpStart plots every tile in the canvas, so content can be placed with precision.



Technical specifications		0 inputs/6 outputs model	4 inputs/6 outputs model
<b>Input</b>	number and type	• 0	• 4 x DVI-I (2 x VGA to DVI, 1 x HDMI to DVI and 1 x Component to DVI adapters included)
	max. resolution per channel	• n/a	• 1920 x 1200 (Digital), 2048 x 1536 (Analog) <sup>1</sup>
	HDCP	• n/a	• Not supported
<b>Output</b>	number and type	• 6 x mini DisplayPort (6 x active mDP to DVI-D adapters included)	
	max. resolution per channel	• 1920 x 1200 @ 60Hz via single-link DVI • 2560 x 1600 @ 60Hz via dual-link DVI (adapters not included) • 4096 x 2160 @ 60Hz via DisplayPort 1.2	
	HDCP	• Supported	
<b>System</b>	platform	• HP Z620 Workstation	
	operating system	• Windows 7 Professional 64-bit	
	processor	• 3.6 GHz	
	memory and hard drive	• 16GB • 1 x 1 TB	
	optical drives	• DVD ± RW/Blu-ray	
<b>Connectivity</b>	USB	• USB 2.0: 5 • USB 3.0: 4	
	ethernet	• 2	
	IEEE 1394a	• 2	
	audio out	• 1	
<b>Power</b>	input rating	• 100-240 VAC; 50/60Hz; 3A	
	power consumption	• 86W typical	
<b>Environmental</b>	operating temperature	• 40-95°F (5-35°C)	
	operating humidity	• 8-85% non-condensing	
	storage temperature	• -40-140°F (-40-60°C)	
<b>Physical specifications</b>	dimensions (LxWxH)	• 18.3 x 6.8 x 17.5" (465 x 172 x 445mm)	
	weight	• 39.4lbs (17.9kg)	
	rack mountable	• Yes, with kit 4U	
<b>Accessories</b>	included	• Mouse • Keyboard • mDP adapters (see above)	
	optional	• Rack mount kit	
<b>Regulatory approvals</b>	This product conforms to the following regulations related to product safety, environmental requirements and electromagnetic compatibility (EMC): • Directives: (EC) 2011/65/EU (RoHS) • 2012/19/EU (WEEE) • Regulations: (EC) No. 1907/2006 (REACH) • CAN/CSA C22.2 No. 60950-1 • UL 60950-1 • IEC 60950-1 • EN 60950-1 • FCC, Part 15, Subpart B, Class A • ICES/NMB003 (A) • EN55022/CISPR22 Class A • EN55024/CISPR24 The product is designed to comply to the rules and regulations required for the product to be sold in various regional markets, including: USA/Canada, EU, Norway, Australia/New Zealand, Kuwait, China, Korea, Japan, Mexico, Ukraine, Russia, South Africa, India, and Saudi Arabia		
<b>Limited warranty</b>	• Two years parts and labor limited warranty on hardware • Contact an authorized Christie representative for full details		

<sup>1</sup> Maximum rendered frame rate is affected by the number and resolution of inputs, as follows, based on 60Hz input signals: (Resolution, Inputs, FPS) 1920 x 1200, 1, 45; 1920 x 1200, 2, 20; 1280 x 1024, 1, 60; 1280 x 1024, 2, 50; 1280 x 1024, 4, 40

### Corporate offices

Christie Digital Systems USA, Inc  
USA – Cypress  
PH: 714 236 8610

Christie Digital Systems Canada Inc.  
Canada – Kitchener  
PH: 519 744 8005

### EMEA offices

United Kingdom  
Branch & EMEA  
Head Office  
ViewPoint  
200 Ashville Way  
Wokingham  
Berkshire, U.K.  
RG41 2PL  
PH: +44 (0) 118 977 8000

**Africa**  
Branch Office  
PH: +27 (0)11 510 0094

**Eastern Europe**  
Representative Office  
PH: +36 (0)1 47 48 100

**France**  
Branch Office  
PH: +33 (0) 1 41 21 44 04

**Germany**  
Branch Office  
PH: +49 2161 664540

**Middle East**  
Branch Office  
PH: +971 (0) 4 320 6688

**Spain**  
Branch Office  
PH: +34 91 633 9990

**Italy**  
Independent Sales Consultant Office  
PH: +39 (0) 2 9902 1161

**Russia**  
Independent Sales Consultant Office  
PH: +7 (495) 930-8961



For the most current specification information, please visit [www.christieemea.com](http://www.christieemea.com)

Copyright 2014 Christie Digital Systems USA, Inc. All rights reserved. All brand names and product names are trademarks, registered trademarks or tradenames of their respective holders. Christie Digital Systems Canada Inc.'s management system is registered to ISO 9001 and ISO 14001. Performance specifications are typical. Due to constant research, specifications are subject to change without notice.  
CHRI3575\_EN\_JAN14

**CHRISTIE**<sup>®</sup>