

V2 Engine Power Harness - 0.5kW/1kW/1.2kW Installation Instruction Sheet

SAFETY AND WARNING GUIDELINES

⚠ DANGER HIGH VOLTAGES MAY BE EXPOSED! Always power down and disconnect power sources prior to servicing. Once the projector is powered down, allow the cooling fans to automatically turn OFF before disconnecting from AC and opening the projector.

⚠ WARNING QUALIFIED SERVICE TECHNICIANS REQUIRED! All module replacement procedures must be performed by Christie accredited service technicians.

⚠ WARNING NON-INSULATED DANGEROUS VOLTAGES MAY BE EXPOSED! Always disconnect from AC prior to disassembly.

⚠ WARNING OBSERVE ALL ELECTROSTATIC PRECAUTIONS! Use a grounded wrist strap when handling electronic assemblies.

⚠ CAUTION Never operate the projector (or the fans) without all the covers installed.

INTRODUCTION

The Roadster LP Reliability Kit improves handling of the 3.3V rail to the engine as well as provides strain relief to the engine power connectors.

PARTS INCLUDED

Adhesive Tie Wrap Mount (1)
Tie Wraps (2)
Harness Cable (1)
Service Assembly Instruction Sheet

TOOLS REQUIRED

Phillips #1 & 2
Needle Nose Pliers

INSTRUCTIONS

1. Remove filter door.
2. Remove top cover.



Figure 1 Remove Covers

3. Cut zip ties holding the harness wrap and remove for use with the new replacement harness.

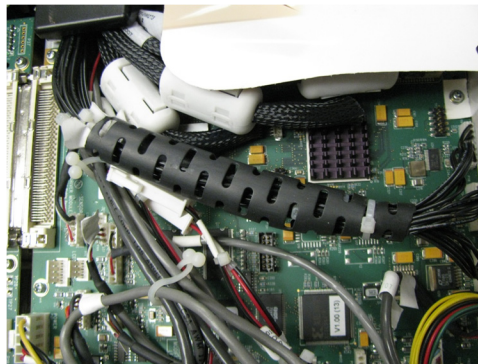


Figure 2 Remove Harness Wrap

4. Remove (2) white plastic covers to provide visual access to the engine power harnesses.

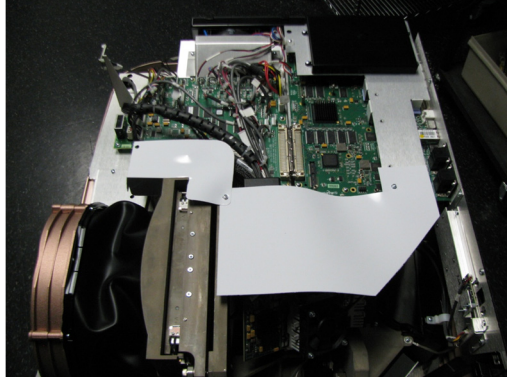


Figure 3 Remove Plastic White Covers

5. Remove (2) screws holding the plastic harness bracket in place. **NOTE:** Pay attention to the orientation of the bracket before removal and set aside to reinstall later. See [Figure 4 Remove Plastic Harness Bracket](#).

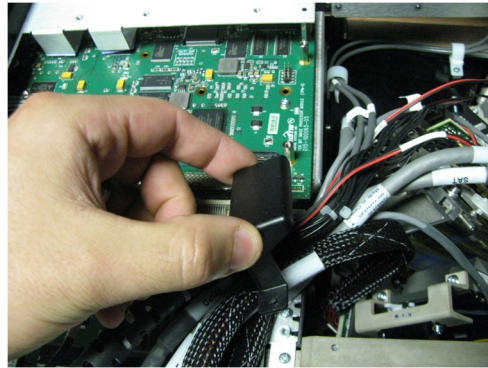


Figure 4 Remove Plastic Harness Bracket

6. Before installing the new harness routing strain relief, clean the target area with rubbing alcohol.
7. Place the new harness routing strain relief in the location as shown in [Figure 5 Install Harness Routing Strain Relief](#).

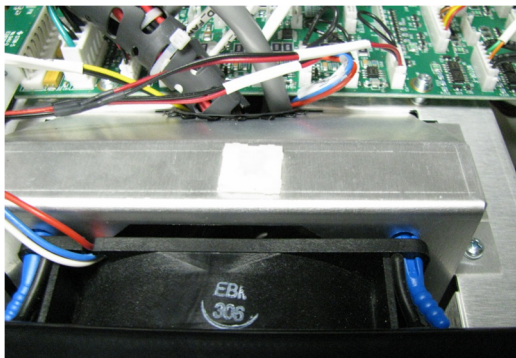


Figure 5 Install Harness Routing Strain Relief

8. Disconnect existing power harness from P117/P118/P119 on the panel driver.

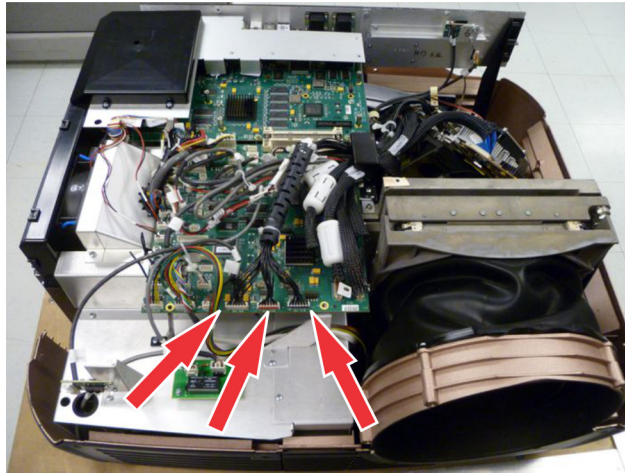


Figure 6 P117/P118/P119

9. Connect new harness into P117/P118/P119.
10. Route new power harness along the same path as those that are being removed.
11. Disconnect other end of existing power harness from the engine and remove.

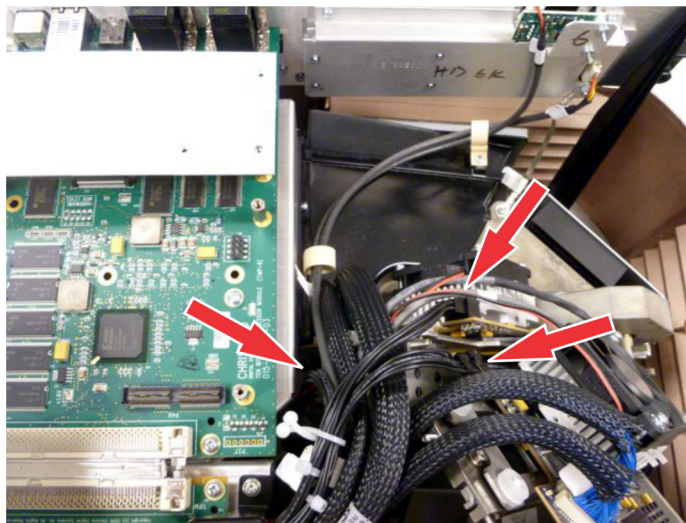


Figure 7 Disconnect Existing Harness From Engine

12. Connect new harness to engine.

13. Disconnect existing J121 and J36 connectors. See [Figure 8 J121 and J36](#).

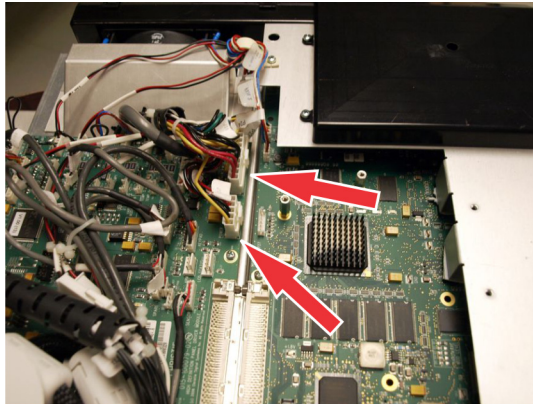


Figure 8 J121 and J36

14. Connect new harness J121 and J36 to the panel driver.
15. Connect existing harness J121 and J36 into P121 and P36 of the new harness. See [Figure 9 New Harness Layout](#).
16. Install zip ties and reinstall the harness wrap as shown in [Figure 5](#). **NOTE:** Make sure that the harness cables are tightly wrapped and placed in a low profile to prevent pinching when re-installing the Top Cover.

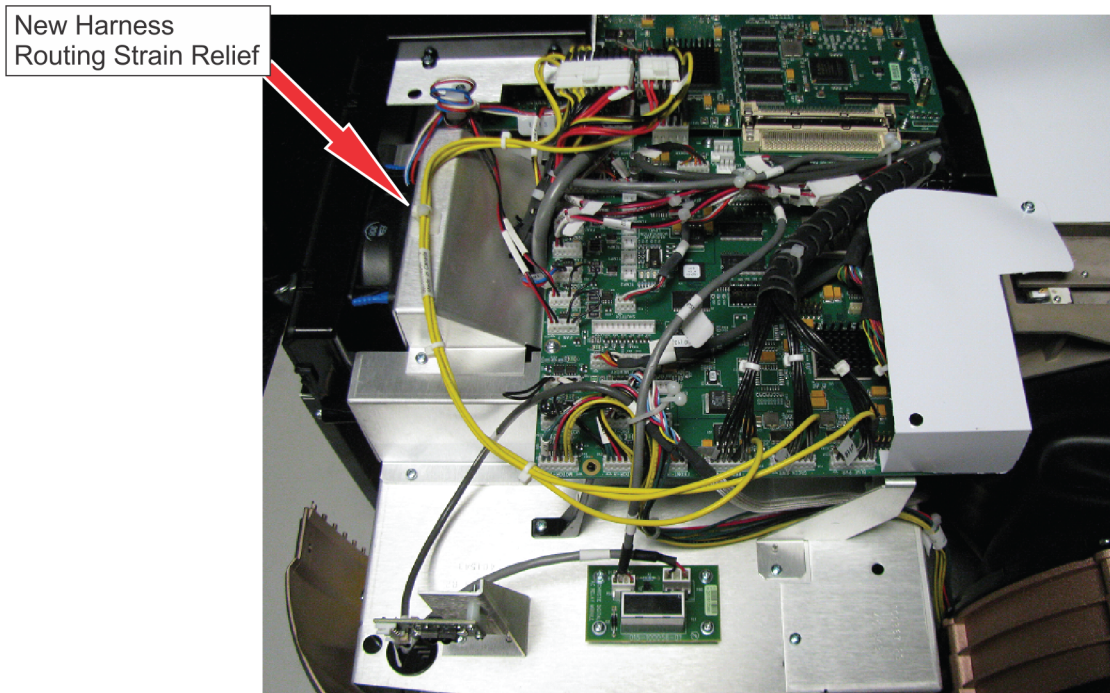


Figure 9 New Harness Layout

17. Reinstall plastic harness bracket.
18. Reinstall white plastic covers.
19. Reinstall top cover.
20. Reinstall filter door.