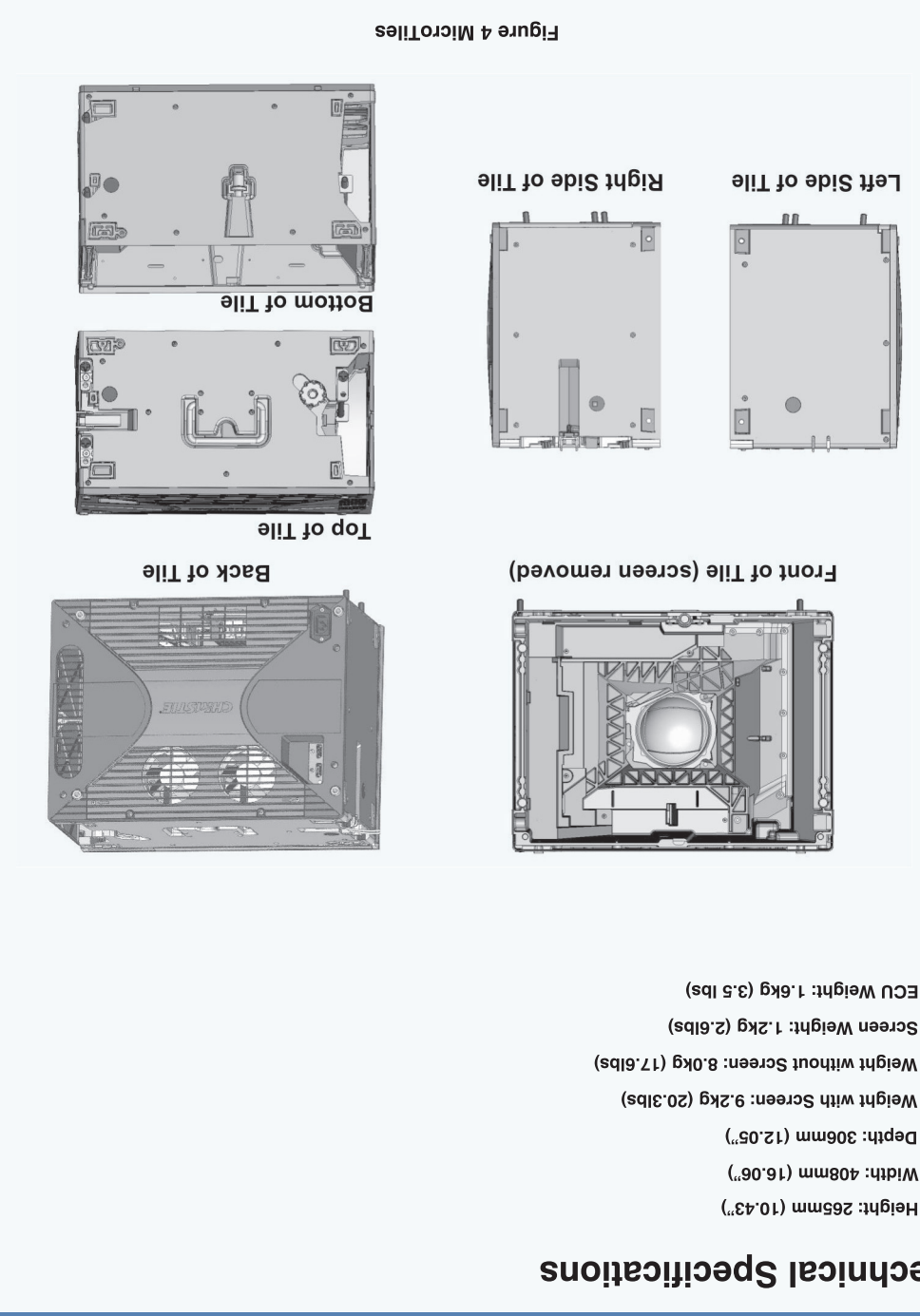
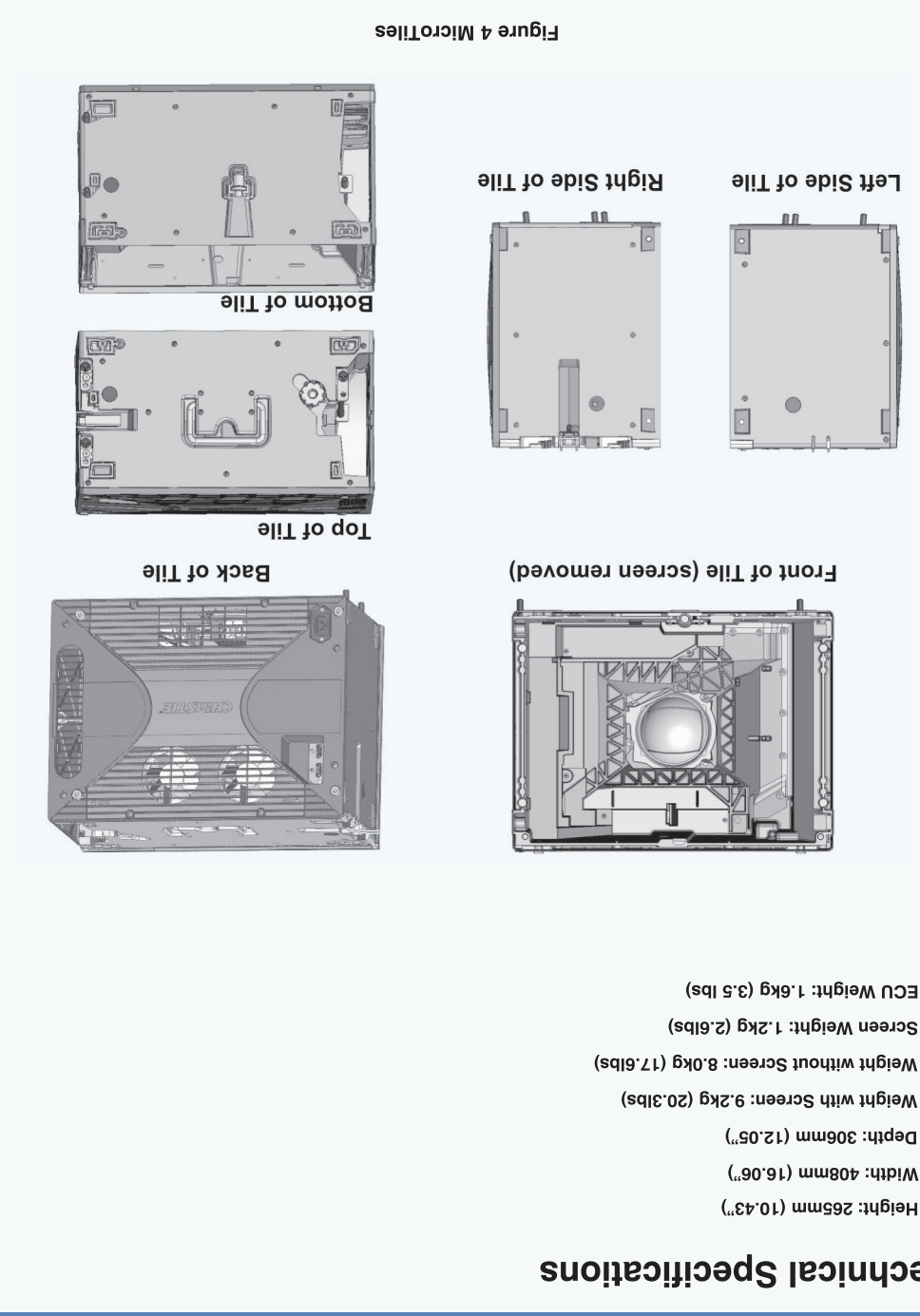


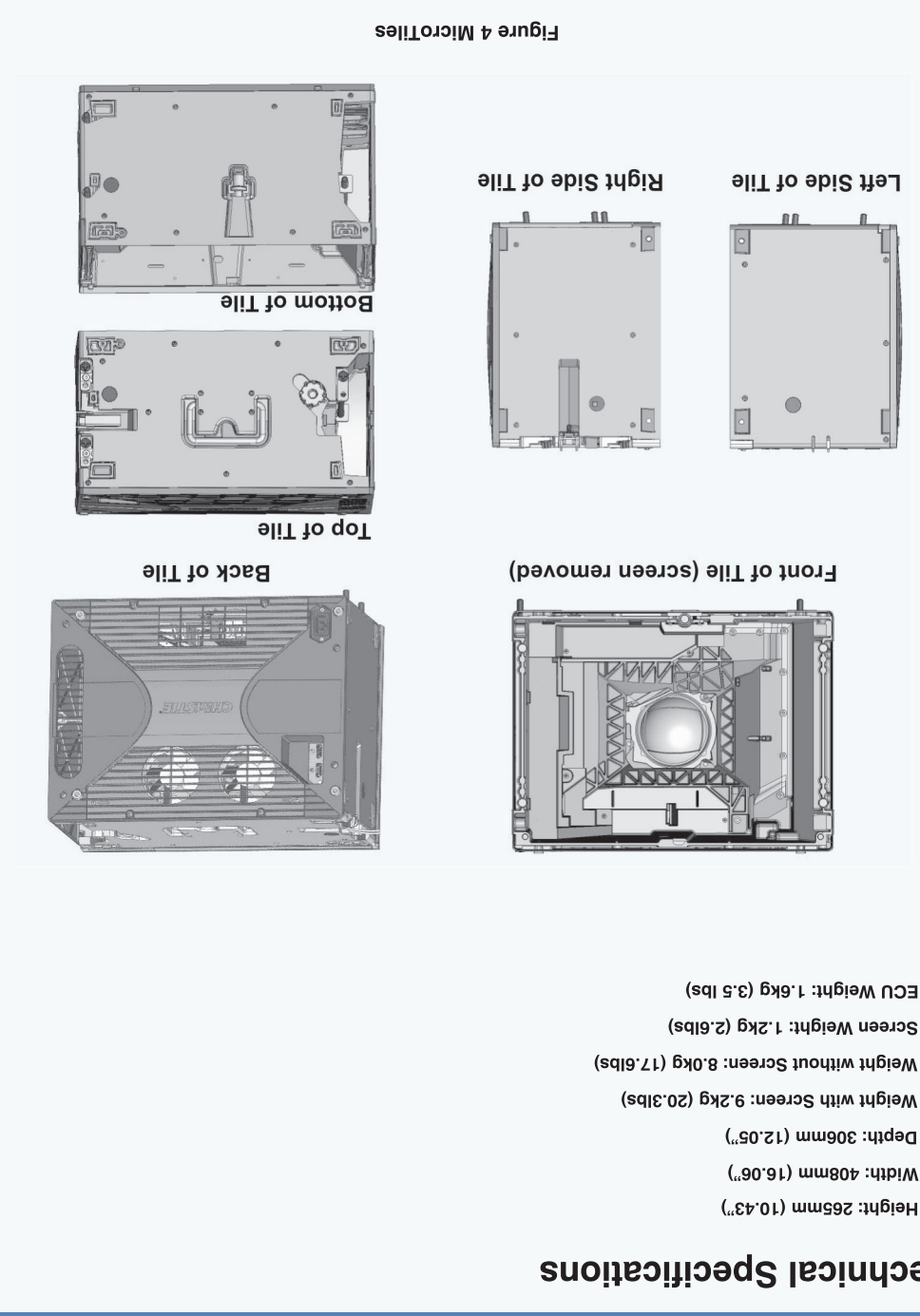
- Optional Accessories**
- External Control Unit E100 (P/N: 123-101103-01)
 - Includes:
 - Display Port Cable, 3m
 - Mounting Bracket 2 pck. (P/N: 123-107109-01)
 - Includes:
 - Center Latching Feet x3
 - 3 Screws
 - Center Feet 3 pck. (P/N: 123-106108-01)
 - Includes:
 - Right End Latching Foot
 - 1 Screw
 - Left End Latching Foot
 - End Feet Kit (P/N: 123-105107-01)
 - Includes:
 - 1 Kit also supports up to 2 ECU's, which includes 2 line cords and 2 power cords.
 - 1 Kit also supports up to 9 MicroTiles, which includes 9 power cords with retention clips.
 - Yield Kit (P/N: 123-121016-01)
 - 1 Kit supports up to 9 MicroTiles. Kit includes 9 power cords with retention clips.
 - NOTE: This kit does not include the correct power cords. It is suitable for regions outside of North America that accept 230VAC.
 - * Refer to the section of the Christie® MicroTiles User Manual (P/N: 020-100329-xx) that outlines the regional acceptance for 230VAC. Also, for more information on where these cords may be used and the difference between the 2 kits.
 - Setup Kit (P/N: 123-101001-01)
 - 1 Kit also supports up to 2 ECU's, which includes 2 line cords and 2 power cords.
 - 1 Kit also supports up to 9 MicroTiles, which includes 9 power cords with retention clips.
 - NOTE: This kit does not include the correct power cords. It is suitable for regions outside of North America that accept 230VAC.
 - * Refer to the section of the Christie® MicroTiles User Manual (P/N: 020-100329-xx) containing additional technical documentation.
 - Screen Removal Tool
 - Screen Removal Tool
 - Screen Removal Guide (P/N: 020-100331-xx)
 - Screen Taps for Shifting Many Screens
 - Christie® MicroTiles Quick Setup Guide (P/N: 020-100331-xx)
 - User Kit (P/N: 123-101101-01)
 - Includes:
 - Screen Alignment Screws
 - 2 Horizontal Adjustment Screws
 - Light Seal Trim
 - Weight without Screen: 8.0kg (17.6lbs)
 - Weight with Screen: 9.2kg (20.3lbs)
 - Depth: 306mm (12.05")
 - Display Port Cable, 3m
 - Display Unit
 - Height: 265mm (10.43")
 - ECU Weight: 1.5kg (3.3lb)
 - Screens Weight: 1.3kg (2.8lb)



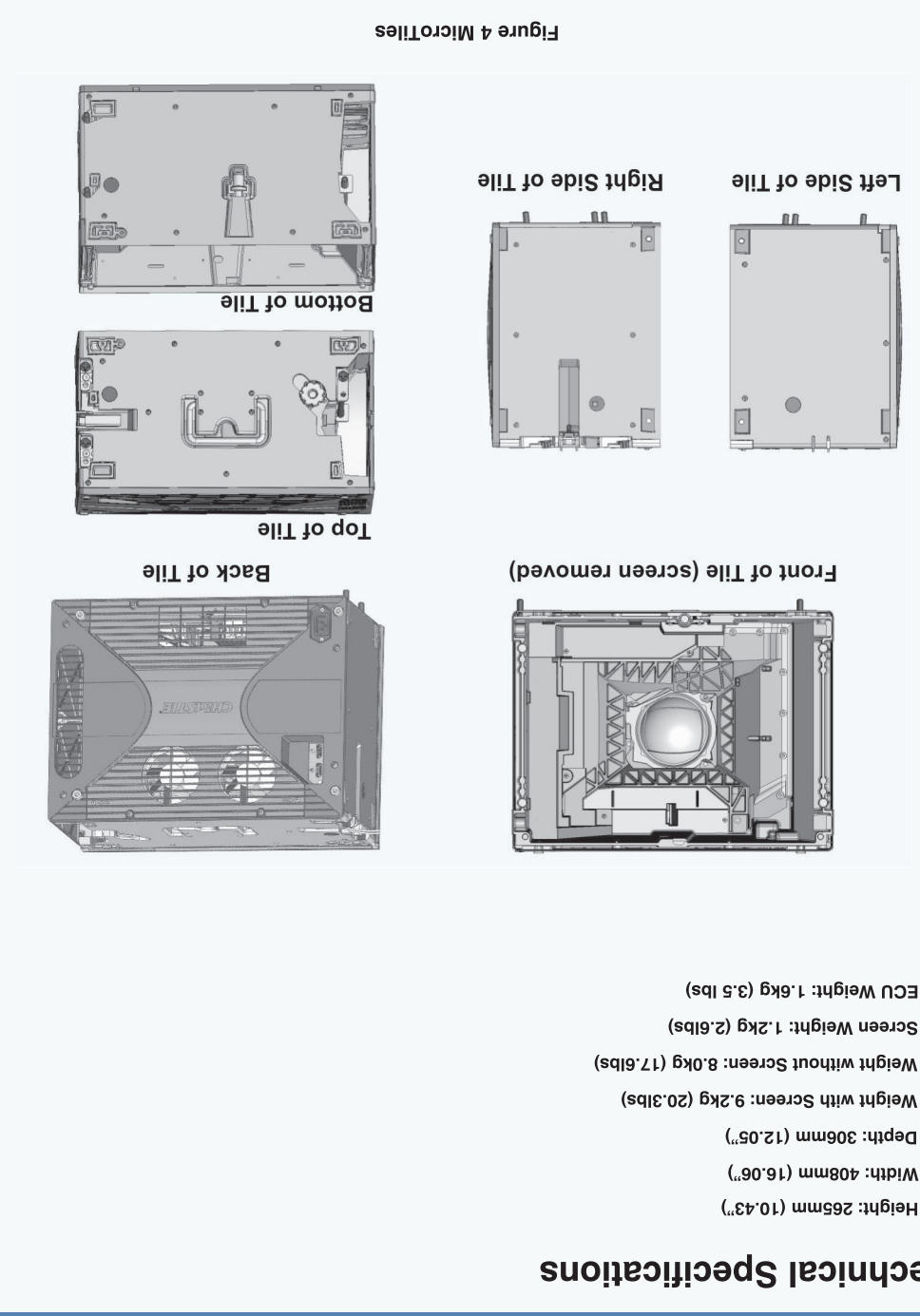
- Required Tools and Hardware**
- Light Seal Trim
 - Display Unit
 - Display Unit
 - Display Unit
 - Display Unit
 - Display Unit
 - Display Unit
 - Display Unit
 - Display Unit
 - Display Unit



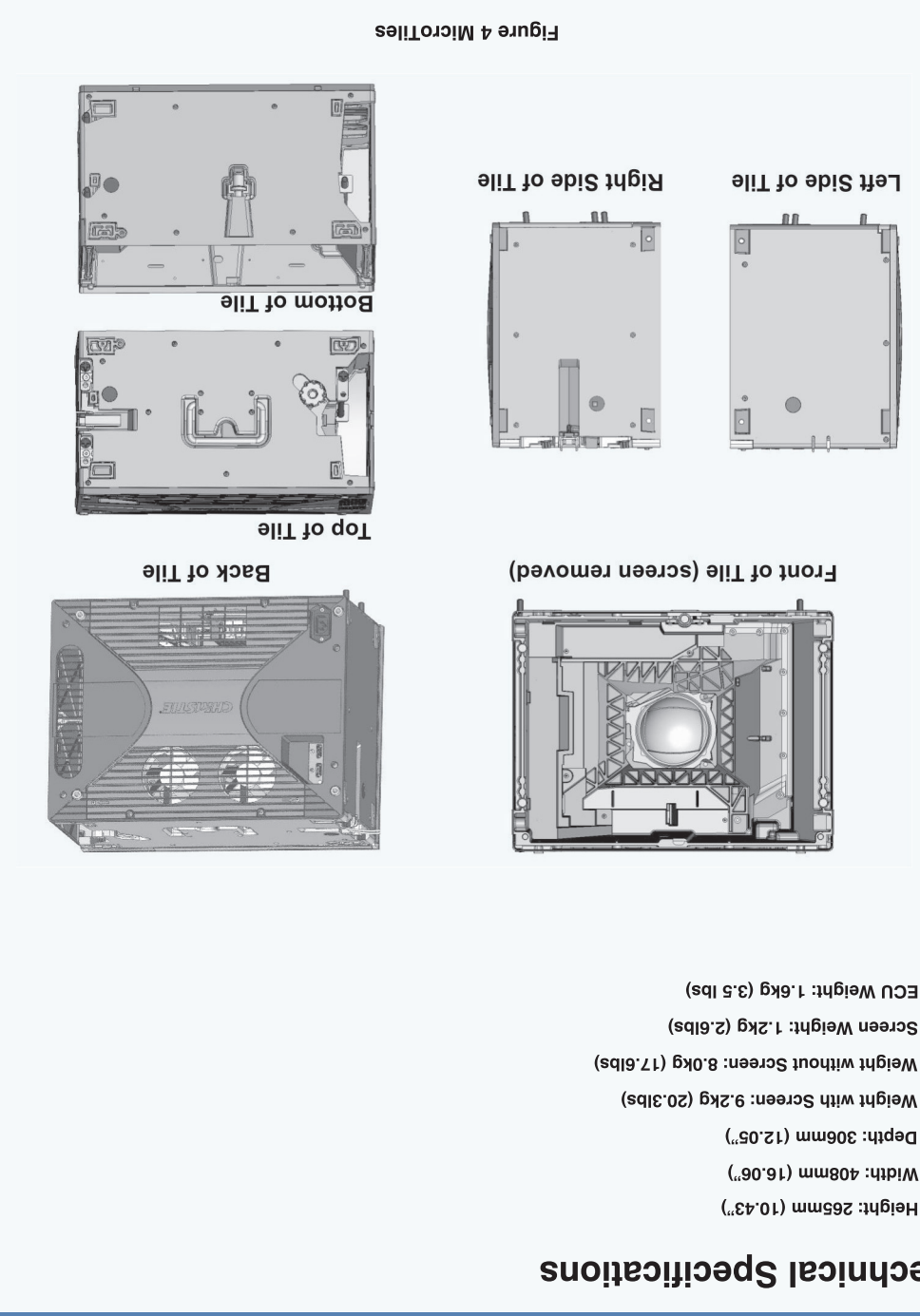
- Required Tools and Hardware**
- Light Seal Trim
 - Display Unit
 - Display Unit
 - Display Unit
 - Display Unit
 - Display Unit
 - Display Unit
 - Display Unit
 - Display Unit
 - Display Unit



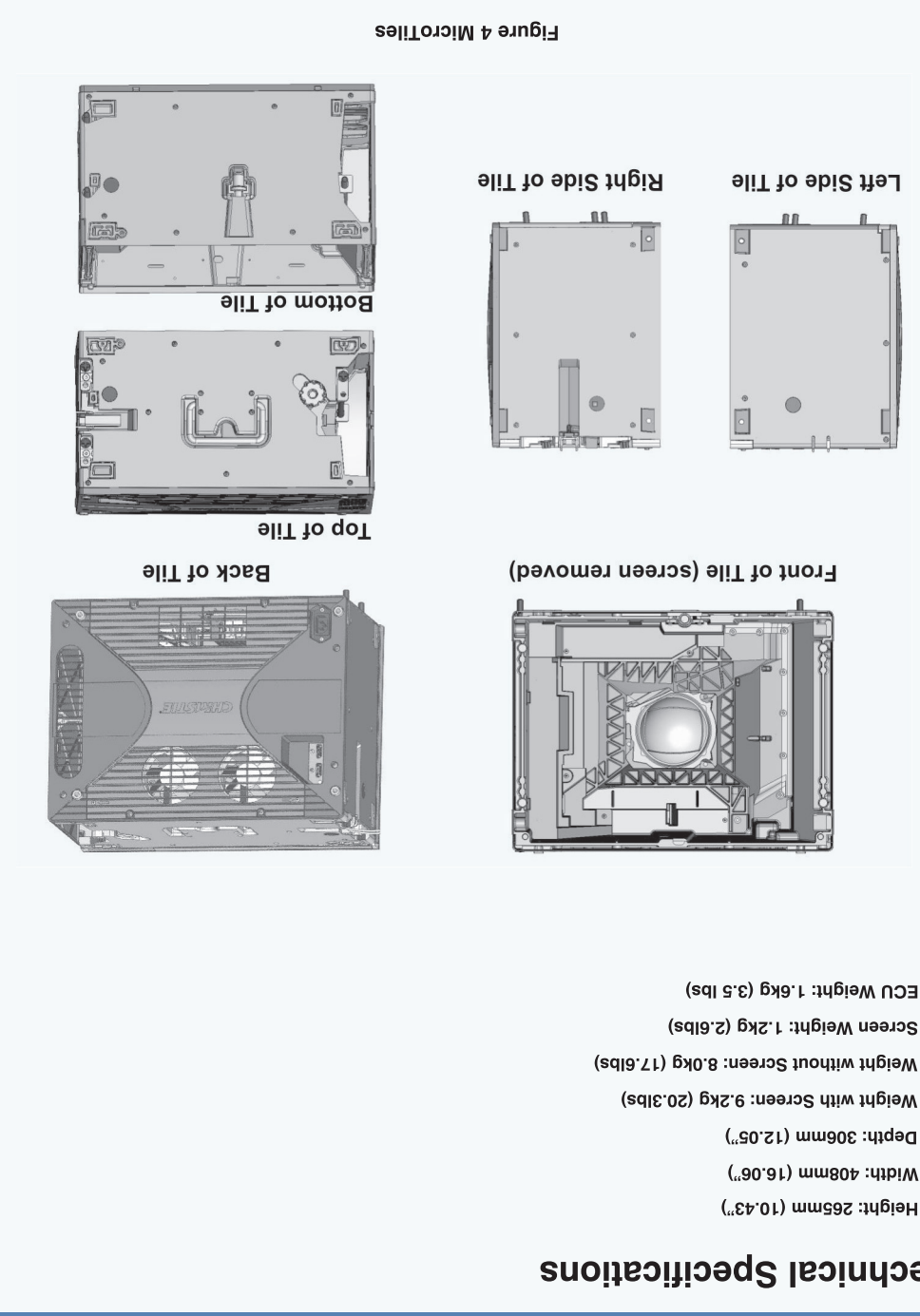
- Labels and Markings**
- CAUTION** indicates a hazardous situation which, if not avoided, could result in minor or moderate injury.
 - WARNING** indicates a hazardous situation which, if not avoided, could result in death or serious injury.
 - DANGER** indicates a hazardous situation which, if not avoided, will result in death or serious injury.
 - WARNING** indicates a hazardous situation which, if not avoided, could result in death or serious injury.
 - CAUTION** indicates a hazardous situation which, if not avoided, could result in minor or moderate injury.
 - NOTICE** Information provided with this heading addresses practices not related to personal injury.



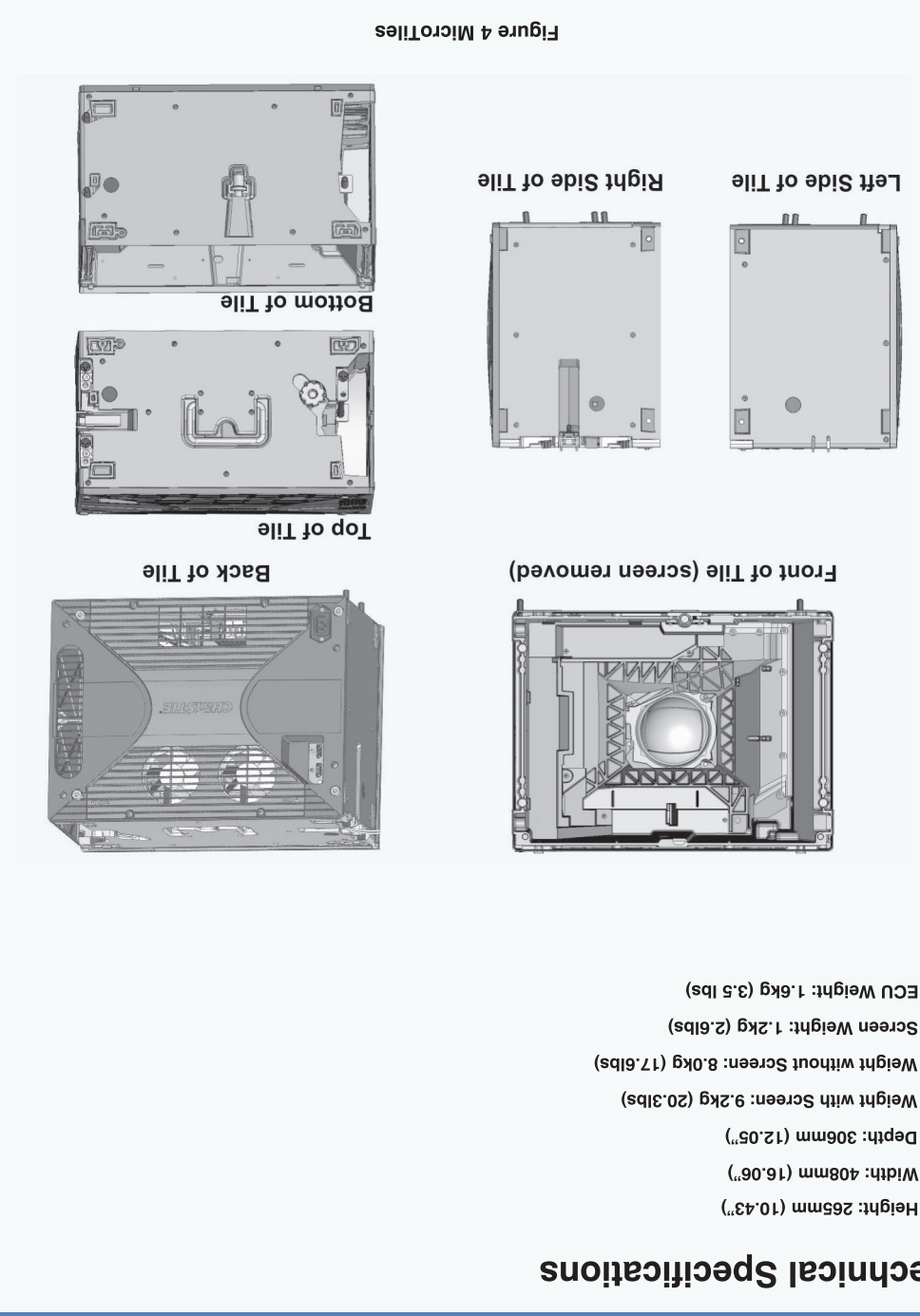
- Product Overview**
- Christie® MicroTiles™ (Christie MicroTiles) are a new innovation in the realm of modular display technology. Specifically designed for maximum image quality in high ambient light environments, Christie MicroTiles are ideal for a wide range of indoor applications, from architectural and out-of-home, to control rooms and event production. Leveraging the best points of rear projection and light emitting diode (LED) technology, Christie MicroTiles offer substantially brighter images and greater colors than most LCD and plasma displays. With no practical limits to the number of tiles that can be stacked together, Christie MicroTiles produce a virtually seamless canvas of super-fine pixels with no overall resolution limitations.
 - Limited only by your imagination. Stack them, stagger them - see your ideas come to life, whatever, whenever and however you want. Christie MicroTiles can be configured in any shape and size you imagine.
 - Snap, link and go. Lightweight tiles lock together as simply as a favorite childhood toy and setup is easy through our External Control Unit (ECU). Christie MicroTiles automatically detect each other and are continuously calibrated for color and brightness. Tear them down, reconfigure them and they'll still recognize each other and recalibrate for you.
 - Built to last. With rock solid housing, durable screen and long-lasting LED light engine, your Christie MicroTiles display is here to stay. With 100% front access, in less than 15 minutes you can repair or replace any service module without bringing down any of the other tiles. Obviously this greatly extends the life of your product and therefore your financial investment.
 - When color matters. Christie MicroTiles offers you color reproduction capability that exceeds standard LCD displays by over 50%. When you need a specific red, it gives you that red, brown - no longer a challenge. Maintain creative intent, your brand identity, your vision by utilizing Christie MicroTiles.
 - Higher resolution. In this pixel powerhouse you get 70k more pixels than the most popular 4mm surface mount display LEDs. Your logo will never look like a blurred mess again. Your art will always look flawless. Your geographical content will never be misleading.
 - Distance is not a factor. Christie MicroTiles look amazing at ANY angle and ANY viewing distance. Plus you can walk right up to the tile, wave your hand in front of it, touch it - it's cool and remains that way without sending your HVAC bills through the roof.



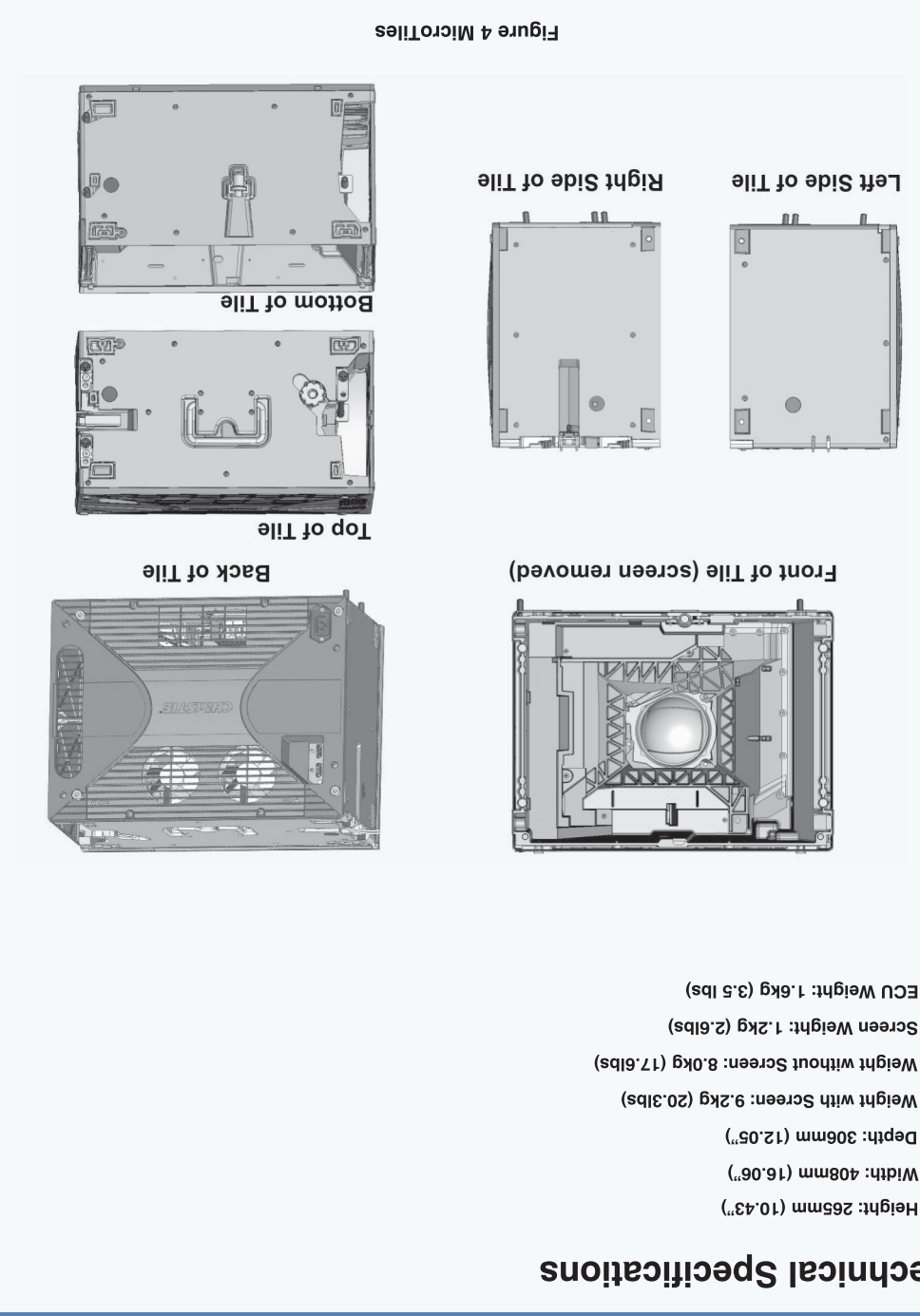
- Corporate offices**
- USA-Cypress**
ph: 714-236-8610
 - Canada-Kitchener**
ph: 519-744-8005
- Worldwide offices**
- United Kingdom**
ph: +44 118 977 8000
 - Hungary/Eastern Europe**
ph: +36 (0) 1 47 48 100
 - Beijing**
ph: +86 10 6561 0240
 - Germany**
ph: +49 2161 664540
 - Singapore**
ph: +65 6877 8737
 - Korea**
ph: +82 2 702 1601
 - France**
ph: +33 (0) 1 41 21 44 04
 - Shanghai**
ph: +86 21 6278 7708
 - Japan**
ph: +81 3 3599 7481



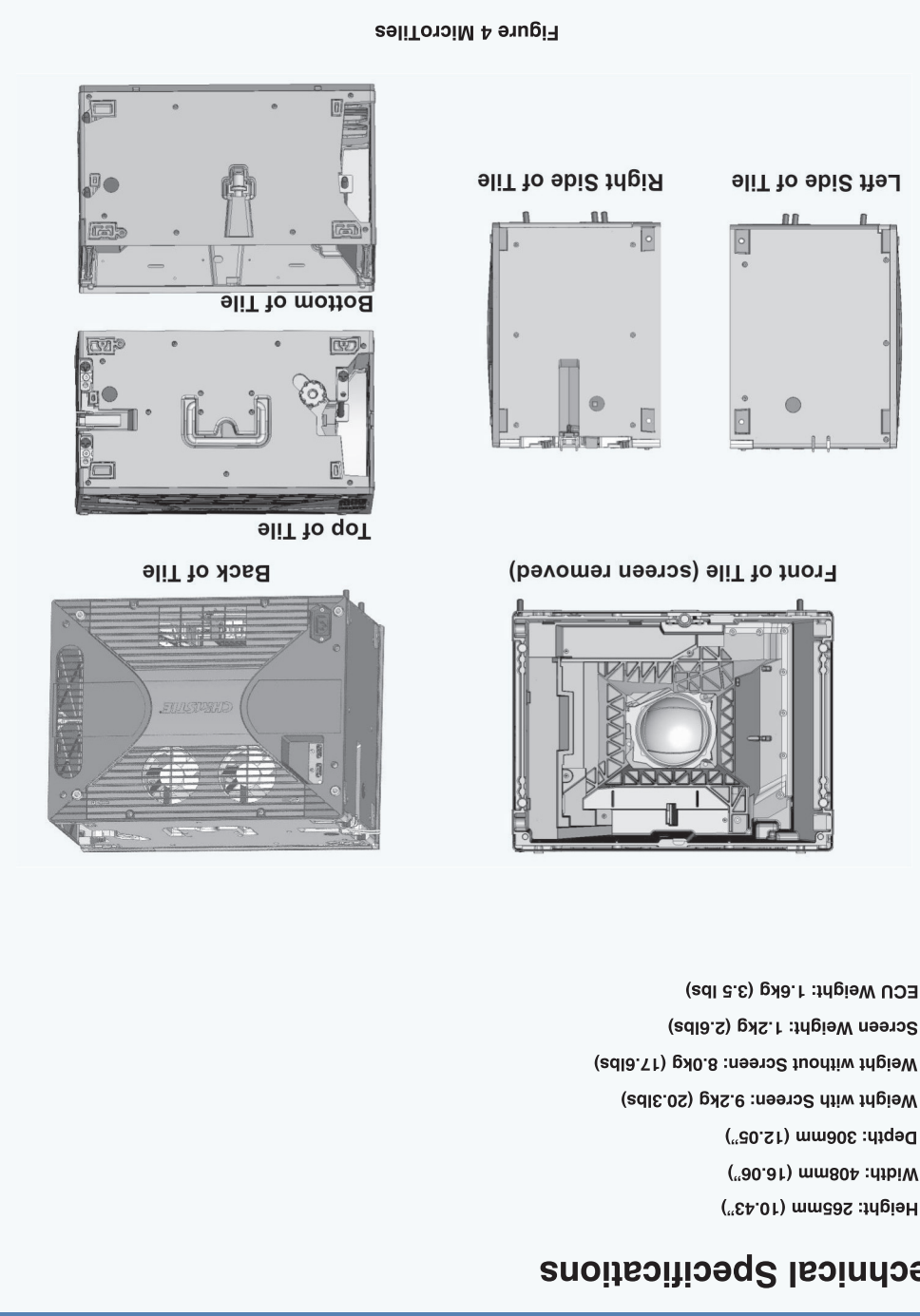
- Corporate offices**
- USA-Cypress**
ph: 714-236-8610
 - Canada-Kitchener**
ph: 519-744-8005
- Worldwide offices**
- United Kingdom**
ph: +44 118 977 8000
 - Hungary/Eastern Europe**
ph: +36 (0) 1 47 48 100
 - Beijing**
ph: +86 10 6561 0240
 - Germany**
ph: +49 2161 664540
 - Singapore**
ph: +65 6877 8737
 - Korea**
ph: +82 2 702 1601
 - France**
ph: +33 (0) 1 41 21 44 04
 - Shanghai**
ph: +86 21 6278 7708
 - Japan**
ph: +81 3 3599 7481



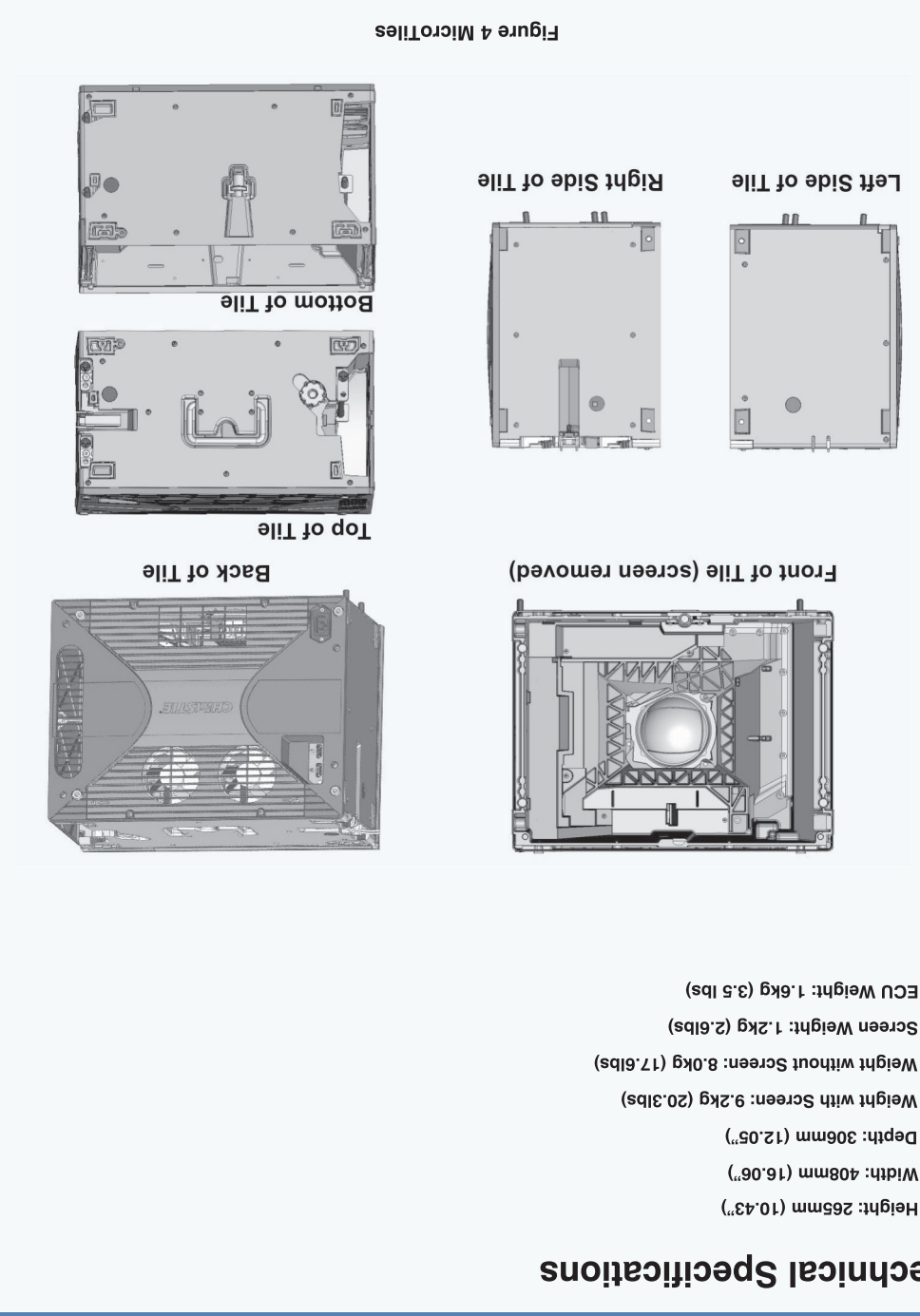
- Corporate offices**
- USA-Cypress**
ph: 714-236-8610
 - Canada-Kitchener**
ph: 519-744-8005
- Worldwide offices**
- United Kingdom**
ph: +44 118 977 8000
 - Hungary/Eastern Europe**
ph: +36 (0) 1 47 48 100
 - Beijing**
ph: +86 10 6561 0240
 - Germany**
ph: +49 2161 664540
 - Singapore**
ph: +65 6877 8737
 - Korea**
ph: +82 2 702 1601
 - France**
ph: +33 (0) 1 41 21 44 04
 - Shanghai**
ph: +86 21 6278 7708
 - Japan**
ph: +81 3 3599 7481



- Corporate offices**
- USA-Cypress**
ph: 714-236-8610
 - Canada-Kitchener**
ph: 519-744-8005
- Worldwide offices**
- United Kingdom**
ph: +44 118 977 8000
 - Hungary/Eastern Europe**
ph: +36 (0) 1 47 48 100
 - Beijing**
ph: +86 10 6561 0240
 - Germany**
ph: +49 2161 664540
 - Singapore**
ph: +65 6877 8737
 - Korea**
ph: +82 2 702 1601
 - France**
ph: +33 (0) 1 41 21 44 04
 - Shanghai**
ph: +86 21 6278 7708
 - Japan**
ph: +81 3 3599 7481



- Corporate offices**
- USA-Cypress**
ph: 714-236-8610
 - Canada-Kitchener**
ph: 519-744-8005
- Worldwide offices**
- United Kingdom**
ph: +44 118 977 8000
 - Hungary/Eastern Europe**
ph: +36 (0) 1 47 48 100
 - Beijing**
ph: +86 10 6561 0240
 - Germany**
ph: +49 2161 664540
 - Singapore**
ph: +65 6877 8737
 - Korea**
ph: +82 2 702 1601
 - France**
ph: +33 (0) 1 41 21 44 04
 - Shanghai**
ph: +86 21 6278 7708
 - Japan**
ph: +81 3 3599 7481



- Corporate offices**
- USA-Cypress**
ph: 714-236-8610
 - Canada-Kitchener**
ph: 519-744-8005
- Worldwide offices**
- United Kingdom**
ph: +44 118 977 8000
 - Hungary/Eastern Europe**
ph: +36 (0) 1 47 48 100
 - Beijing**
ph: +86 10 6561 0240
 - Germany**
ph: +49 2161 664540
 - Singapore**
ph: +65 6877 8737
 - Korea**
ph: +82 2 702 1601
 - France**
ph: +33 (0) 1 41 21 44 04
 - Shanghai**
ph: +86 21 6278 7708
 - Japan**
ph: +81 3 3599 7481

1 Assemble First Row

NOTICES

- Ensure the surface on which the array is installed is flat.
- DO NOT remove the lens guard from the tiles or the dust cap from the lens until assembly is complete.
- DO NOT attach the screens until the entire array is assembled.
- DO NOT insert vertical alignment rods into the tiles installed in the first row to ensure they sit level (Figure 5).
- Complete the first row and ensure it is aligned properly before continuing on to the next row.
- DO NOT construct an array column by column.

- Ensure the latches on the tiles are open before beginning (Figure 1).
- Begin installing the first row of tiles starting from either the left or right-hand side of the array. **Never start a build from the center.**

- (OPTIONAL) If needed, apply light seal trim along the seams between each tile to prevent light leakage. For further information, refer to the *Christie MicroTiles User Manual (P/N: 020-100329-xx)*.

- Position the second tile in-line with the first (Figure 2).

- Insert a horizontal adjustment screw into the mounting points between the first 2 tiles (Figure 2). Use a 5mm hex key to tighten the screw. DO NOT completely tighten until the entire row is complete to allow for adjustments. **NOTICES:** 1) Horizontal adjustment screws are not mandatory, but are recommended in order to achieve optimal horizontal alignment. 2) For optimal positioning and alignment of the first row, use the leveling feet (accessories). Refer to the *Christie MicroTiles User Manual (P/N: 020-100329-xx)*.

- Continue to add the remaining tiles to the first row of the array. Repeat Step 5 for each tile added to the row.

- Snap and lock the side latch onto the adjacent tile. Repeat for every tile in the row.

- Using a 5mm hex key, completely tighten each horizontal adjustment screw. For guidance on how to level the row, refer to the *Christie MicroTiles User Manual (P/N: 020-100329-xx)*.

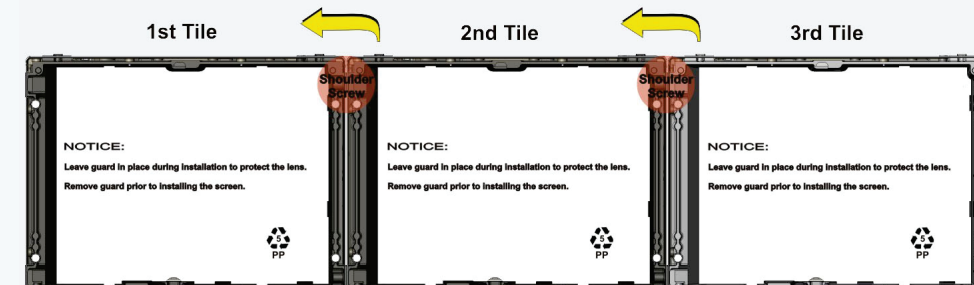


Figure 2 Assemble the First Row of MicroTiles

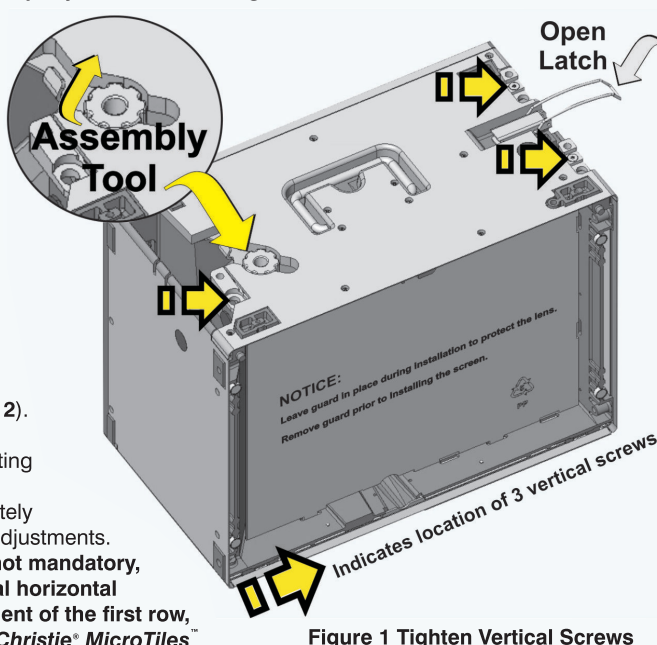


Figure 1 Tighten Vertical Screws

4 Route Cables

NOTICES

- It is not necessary to make a complete loop; however, if you create a complete loop, communication to the entire array will not be lost if 1 tile fails.
- It is advised to connect the cables row by row when an array is setup near a wall. When setting up an array where the back is exposed, first setup the entire array and then connect the cables.
- Ensure there is sufficient slack in the cable to allow servicing of the array from the front. DO NOT tie wrap or secure the cabling if the array is setup near a wall.
- For more complex installations requiring multiple ECUs, refer to the *Christie MicroTiles User Manual (P/N: 020-100329-xx)* and the *Christie MicroTiles Specification and Application Guide (P/N: 020-100334-xx)*.

- Plug the display port cables into any of the 2 ports on the back of the tiles. Either port is acceptable on both the ECU and the tiles (Figure 5). For details on the ECU, refer to the *Christie MicroTiles User Manual*.
- Daisy chain the cable from 1 tile to the next and plug the last cable back into the ECU (Figure 9). **NOTE:** The display port cable has a built-in retention latch. When disconnecting the cable, the latch must be pressed down in order to avoid damaging the cable.

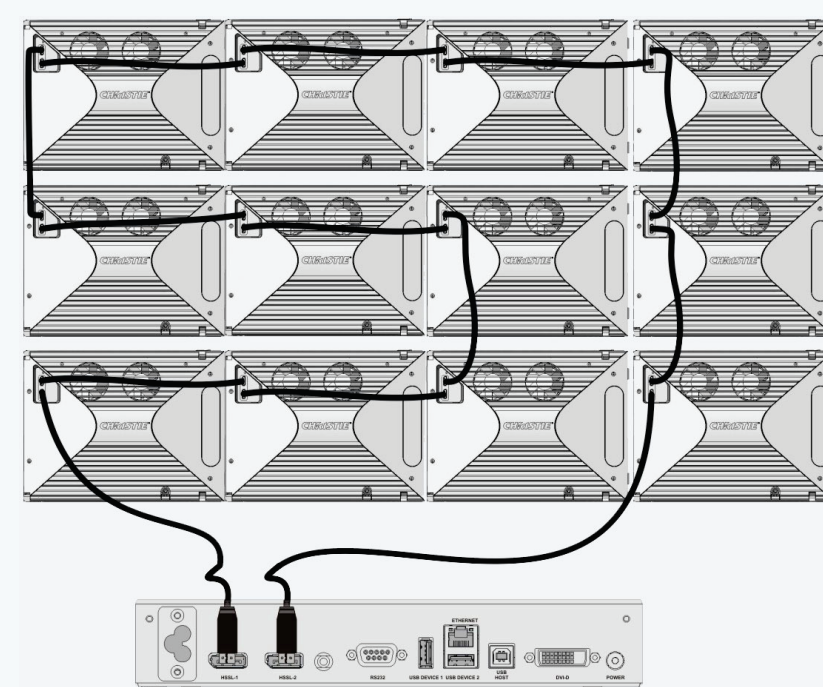


Figure 5 Route Display Port Cables and Connect Sources

2 Assemble Second and Third Rows

⚠ DANGER TIP LOAD! If the array is 2 rows or higher, additional hardware for tip resistance must be used in order to comply with safety regulations and local codes. Either use the rear mounting points on the array or bolt the leveling feet into the base structure in such a way that the weight of each tile is individually supported. For details, refer to the *Christie MicroTiles User Manual (P/N: 020-100329-xx)*.

- Ensure the latches on the tiles are open before beginning (Figure 1).

- Place a tile on top of the first tile in the bottom row (Figure 3). **Never build from the center out.**

- Push the tile back until the front edge is aligned with the front edge of the tile below.

- Using the assembly tool, hand-tighten the 3 vertical alignment rods (Figure 1) to secure the top tile to the tile on the bottom row. DO NOT completely tighten at this point to allow for adjustments.

- Continue to add the remaining tiles to the second row. Insert a horizontal adjustment screw into the mounting points between the first 2 tiles (Figure 6). Use a 5mm hex key to tighten the screw. DO NOT completely tighten until the entire row is complete to allow for adjustments. **NOTICE:** Horizontal adjustment screws are not mandatory, but are recommended in order to achieve optimal horizontal alignment.

- Snap and lock the side latch onto the adjacent tile. Repeat for every tile in the row.

- Once the second row is in place, use the assembly tool to completely tighten the vertical alignment rods on each tile.

NOTICE: Failure to properly tighten the vertical alignment rods causes the tiles to be misaligned, making screen installation difficult.

- Repeat Steps 1 to 7 to construct the next row(s) in the array.



Figure 3 Assemble the Second Row

5 Connect to Power

NOTICE Always check the firmware version installed on the tile(s) and ECU on initial power up. Check the firmware version installed on the product against the version available at www.microtiles.com. Failure to install the latest firmware version can affect system performance.

- Connect the power plug from the ECU into an outlet or power bar.
- Daisy chain the Y-power cords into each tile in the array and connect the standard power plug into an outlet or power bar (Figure 6).
- Apply electrical tape or tie wraps to secure the inline connection between the Y-power cords.
- Press the **Power** button ON at the ECU. The LED status light on the button turns green when the system is ready. **NOTE:** It is recommended that a power bar with an in-line power switch be used to simplify switching the array ON and OFF. If any of the tiles fail to power up, check each connection.

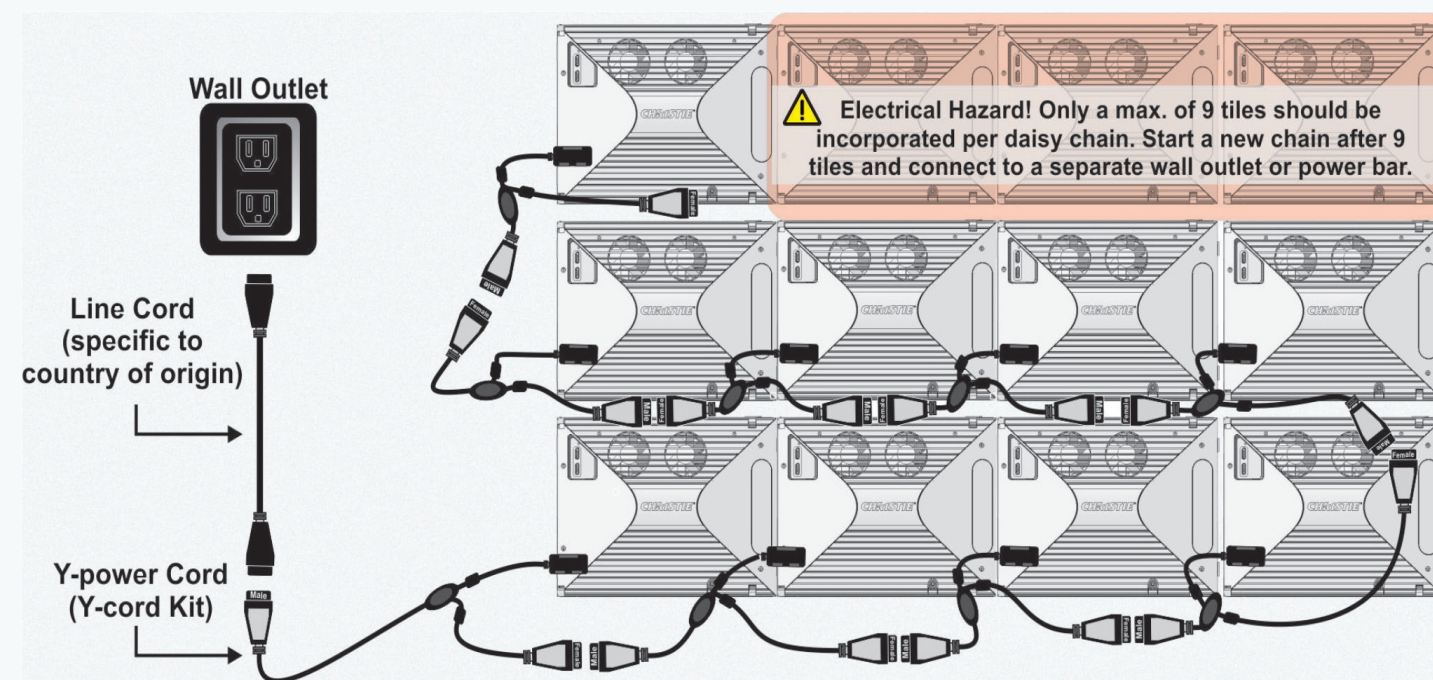


Figure 6 Power Distribution

3 Install Screens

NOTICES

- Avoid touching the screen surface. Always handle from the sides. Remove all hand jewelry before handling.
- Before installing the screen(s) remove the lens guard from the tiles and the dust cap from the lens. Replace anytime the array is torn down and shipped.
- For information on cleaning the screens, refer to the *Christie MicroTiles User Manual (P/N:020-100329-xx)*.
- A minimum clearance of 20mm (0.78") must be provided in front of the screen to allow it to protrude in the event of the thermal actuator being activated. For details, refer to the *Christie MicroTiles User Manual (P/N:020-100329-xx)*.

- Pull the screen tether out from the top of the tile housing and hook it into the locking latch on the screen (Figure 8, left). The tether ensures the screen does not fall if the array is subjected to excessive force/vibrations.
- Working from the bottom to the top of the array, line up the 2 mounting holes on the screen with the 2 pins on the tile (Figure 8, right). Magnets on the housing secure the screen to the tile.

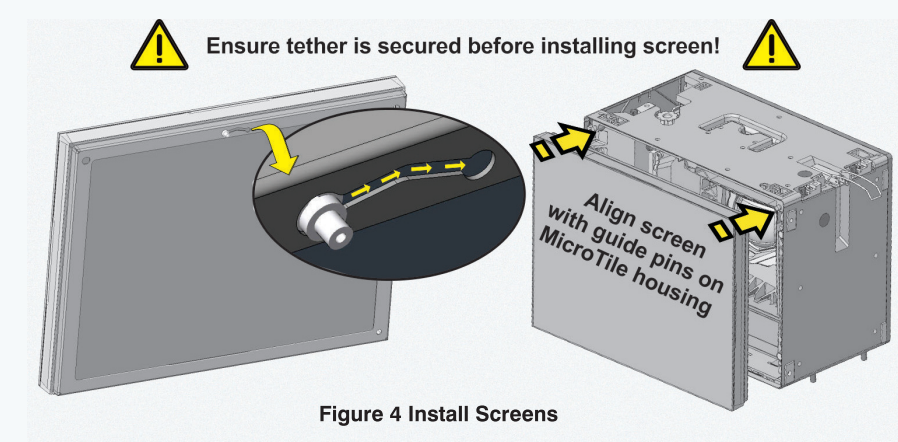


Figure 4 Install Screens

Screen Removal

NOTICE To avoid screen damage ensure the surface of the screen removal tool is clean and free of debris.

- Open the handle on the screen removal tool (provided with the User Kit) and gently position it in the center/top portion of the screen.
- Carefully, push the screen removal tool towards the screen.
- Close the handle on the screen removal tool to apply suction.
- Pull the screen forward and slide the screen tether out of the locking latch before completely removing it.
- Place the screen in a safe location to avoid damaging the surface.
- If the screen is removed for a prolonged period of time (i.e., for storage or shipment) ensure the lens guard and dust cap are replaced. **NOTE:** The lens guard and dust cap are shipped with every tile.

6 Connect Sources

- Connect the DVI-D output from the video source (i.e. media player) to the DVI-D input on the ECU (Figure 11).
- Once the DVI-D is connected and the ECU is powered up, the video is enabled by default. Use the R100 Remote to control the video content through the On Screen Display (OSD). To access the OSD press **Input** on the R100 Remote.

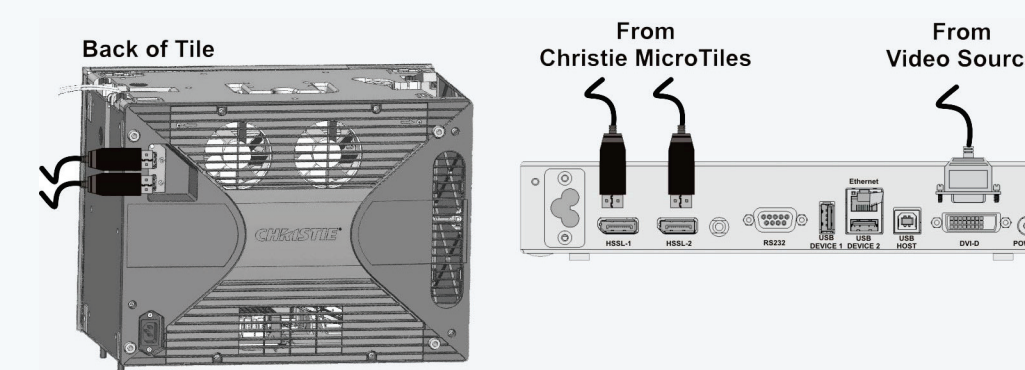


Figure 7 Connect Sources

7 Power Down

- Push the **Power** button OFF at the ECU.
- Move the power bar switch to the OFF position or disconnect the power plug from the outlet.